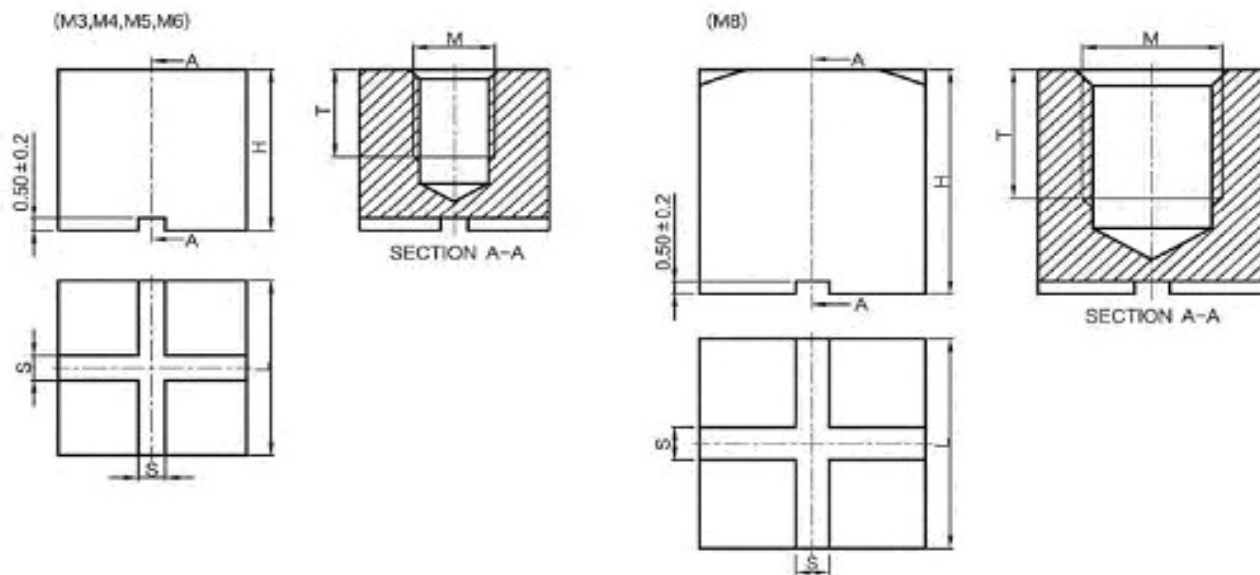


EDCON-COMPONENTS



Technical Drawing (mm)



Technical Specification

For Soldering in SMT, it is suitable for fully automated assembly PCB Connectors for fixing cable lugs.

UNC thread or customer specified modifications available

Material: Brass
 Surface Plating: Tin
 Solder cream Thickness: 120µm
 Heat Resistane: -55°C to +150°C

Packing: Bulk / Tape/Reel

Dimension Order Code Table								
Order Code	M	H	T	L	S ±0.2		IR(A)	Torque
A01	M3	6,5	3,5	7	1		54	0,5Nm.
A02	M4	7,5	4	9	1		72	1,2Nm.
A03	M5	7,5	4	9	1		98	2,2Nm.
A04	M6	11	6,5	10	1		130	3,9Nm.
A05	M8	14	8	13	2		198	9Nm.
A06								
A07								
A08								
A09								
A10								
A11								
A12								

PCB Connectors (SMD)

Part No.: **A25155**

Customer:

DRW:	Jason	CHKD	Wilson	MATL:	Wilson	TOLERANCE	Mason	DATE	14.04.2024
APPD:	Schumi			FINISH	Jamy		Sheet No.		1 from 3

EDCON-COMPONENTS



Ordering Informations

Serie	Size Order Code	Contact Plating	Spezial Function	Spezial Function	ROHS	Packing				
-------	-----------------	-----------------	------------------	------------------	------	---------	--	--	--	--

A25155	Axx	TN	0	0	R	TR				
---------------	------------	-----------	----------	----------	----------	-----------	--	--	--	--

Axx= Look Size Table		0= No function	0= No function	R= ROHS Conform	B101= Bulk-Ware 100PCS
	TN= Tinned				TR= Tape Reel

PCB Connectors (SMD)

Part No.: **A25155**

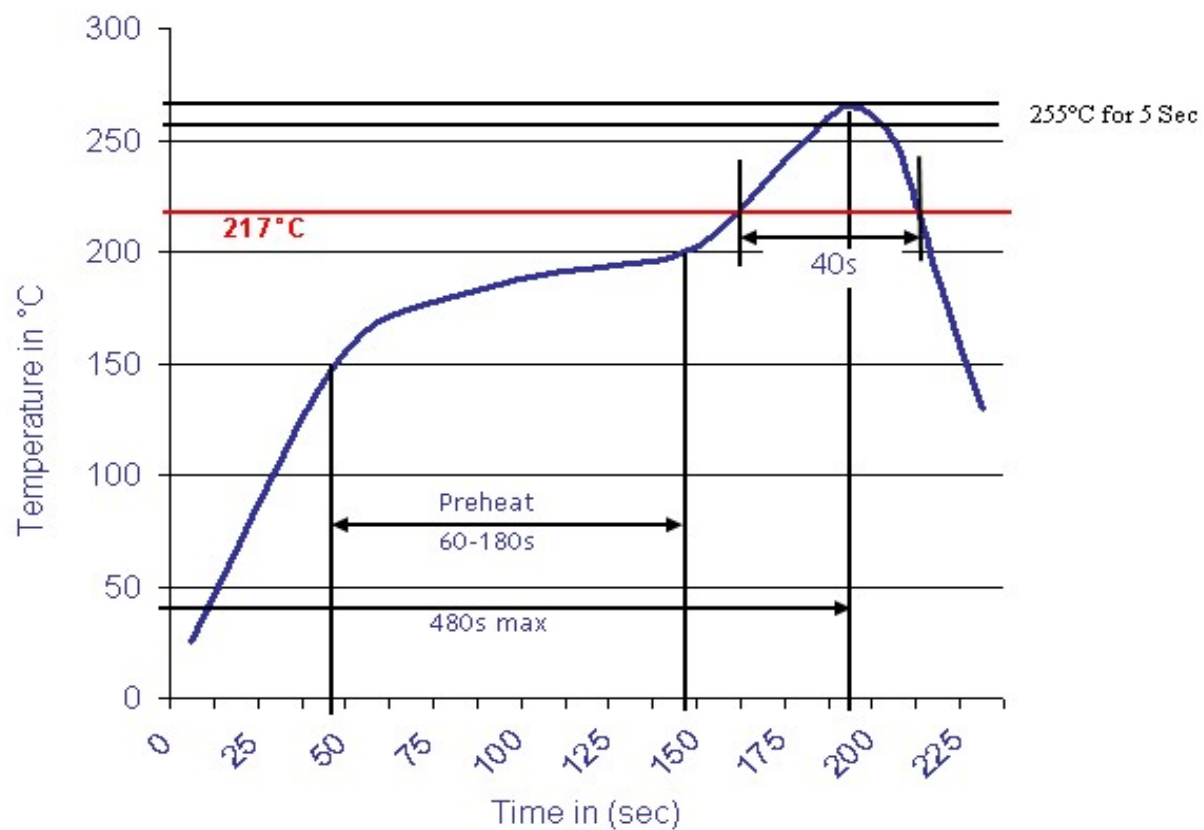
DRW:	Jason	CHKD	Wilson	MATL:	Wilson	TOLERANCE	Mason	DATE	14.04.2024
APPD:	Schumi			FINISH	Jamy		Sheet No.		2 from 3

Customer:
email: info@edcon-components.com



Soldering Profile Curve

Classification Reflow Profile (JEDEC J-STD-020C)



PCB Connectors (SMD)	
Part No.:	A25155
Customer:	

DRW:	Jason	CHKD	Wilson	MATL:	Wilson	TOLERANCE	Mason	DATE	14.04.2024
APPD:	Schumi			FINISH	Jamy		Sheet No.		3 from 3