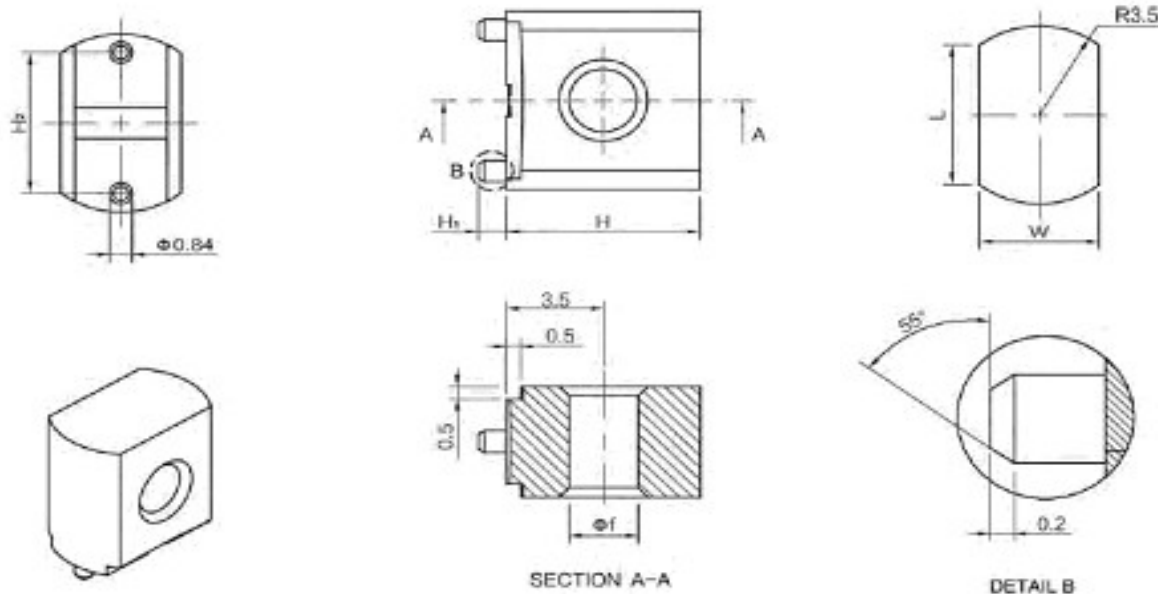


EDCON-COMPONENTS



Technical Drawing (mm)



Technical Specification

For Soldering in SMT, it is suitable for fully automated assembly
PCB Connectors for fixing cable lugs.

High mechanical forces and torques, Small footprint

Material: Brass
Surface Plating: Tin
Solder cream Thickness: 120µm
Heat Resistane: -55°C to +150°C

Packing: Bulk / Tape/Reel

Dimension Order Code Table								
Order Code	Øf/M	L	W	H	H1	H2	IR(A)	Torque
A01	Ø3,3	5,5	4,33	7	1,0	5,44	50	---
A02	M3	5,5	4,33	7	1,0	5,44	50	0,4Nm.
A03								
A04								
A05								
A06								
A07								
A08								
A09								
A10								
A11								
A12								

PCB Connectors (SMD)

Part No.: **A25153**

DRW:	Jason	CHKD	Wilson	MATL:	Wilson	TOLERANCE	Mason	DATE	14.04.2024	Customer:
APPD:	Schumi			FINISH	Jamy		Sheet No.	1 from 3		

www.edcon-components.com

email: info@edcon-components.com

EDCON-COMPONENTS



Ordering Informations

Serie	Size Order Code	Contact Plating	Spezial Function	Spezial Function	ROHS	Packing				
-------	-----------------	-----------------	------------------	------------------	------	---------	--	--	--	--

A25153	-	Axx	TN	0	0	R	TR			
---------------	---	------------	-----------	----------	----------	----------	-----------	--	--	--

Axx = Look Size Table		0 = No function	0 = No function	R = ROHS Conform	B101 = Bulk-Ware 100PCS
	TN = Tinned				TR = Tape Reel

PCB Connectors (SMD)

Part No.: **A25153**

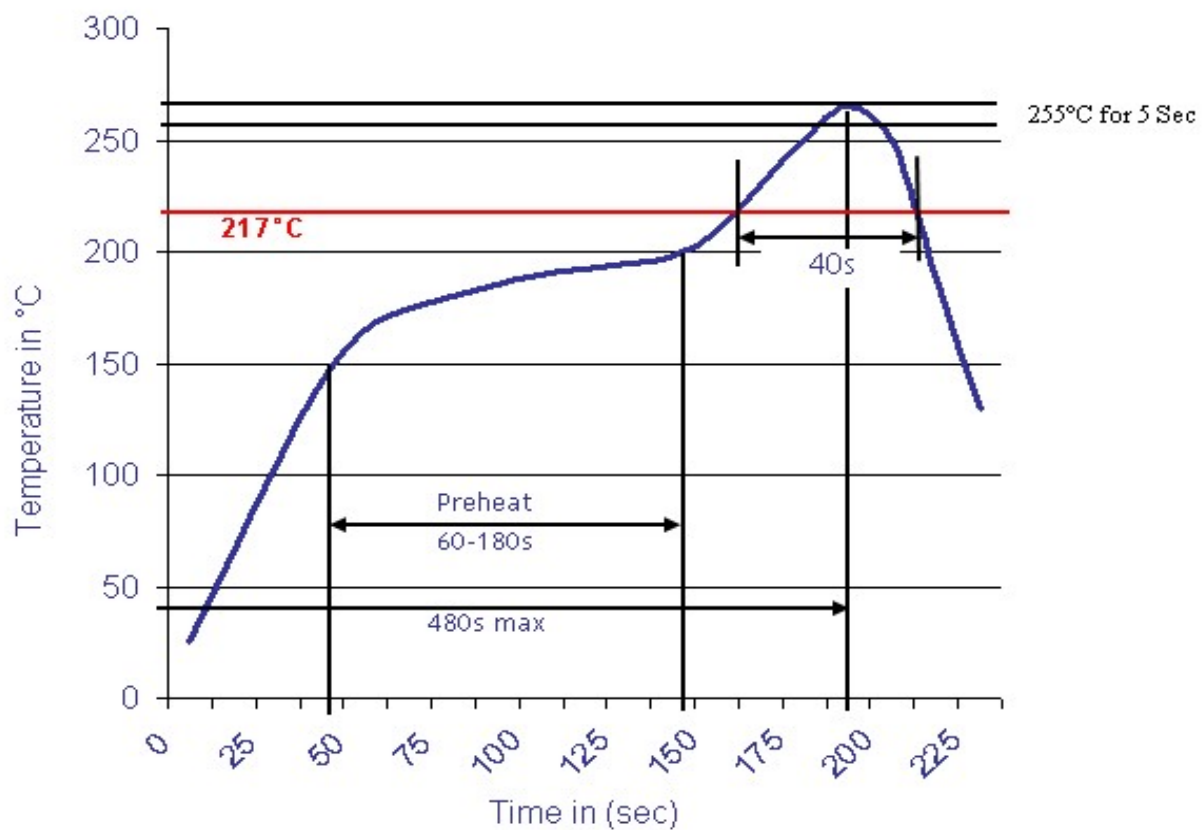
DRW:	Jason	CHKD	Wilson	MATL:	Wilson	TOLERANCE	Mason	DATE	14.04.2024
APPD:	Schumi			FINISH	Jamy		Sheet No.		2 from 3

Customer:
email: info@edcon-components.com



Soldering Profile Curve

Classification Reflow Profile (JEDEC J-STD-020C)



PCB Connectors (SMD)

Part No.: **A25153**

Customer:

DRW:	Jason	CHKD	Wilson	MATL:	Wilson	TOLERANCE	Mason	DATE	14.04.2024
APPD:	Schumi			FINISH	Jamy		Sheet No.		3 from 3