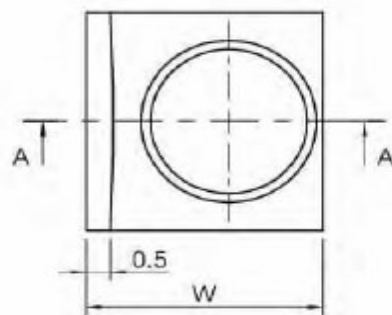
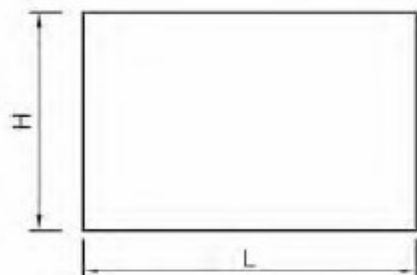
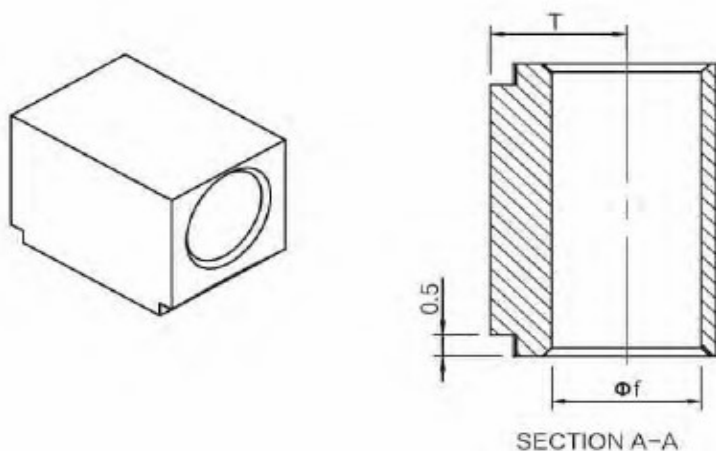


EDCON-COMPONENTS



Technical Drawing (mm)



Technical Specification

For Soldering in SMT, it is suitable for fully automated assembly
PCB Connectors for fixing cable lugs.

UNC thread or customer specified modifications on request

Material: Brass
Surface Plating: Tin
Solder cream Thickness: 120 μ m
Heat Resistance: -55 $^{\circ}$ c to +150 $^{\circ}$ C

Packing: Bulk / Tape/Reel

Dimension Order Code Table							
Order Code	$\phi f/M$	L	W	H	T	IR(A)	Torque
A01	$\emptyset 3$	7	5	5	3	50	---
A02	M3	7	5	5	3	50	0,4Nm.
A03							
A04							
A05							
A06							
A07							
A08							
A09							
A10							
A11							
A12							

PCB Connectors (SMD)

Part No.: **A25152**

Customer:

DRW:	Jason	CHKD	Wilson	MATL:	Wilson	TOLERANCE	Mason	DATE	14.04.2024
APPD:	Schumi			FINISH	Jamy		Sheet No.		1 from 3

www.edcon-components.com

email: info@edcon-components.com

EDCON-COMPONENTS



Ordering Informations

Serie	Size Order Code	Contact Plating	Spezial Function	Spezial Function	ROHS	Packing				
-------	-----------------	-----------------	------------------	------------------	------	---------	--	--	--	--

A25152	-	Axx	TN	0	0	R	TR			
---------------	---	------------	-----------	----------	----------	----------	-----------	--	--	--

Axx = Look Size Table		0 = No function	0 = No function	R = ROHS Conform	B101 = Bulk-Ware 100PCS
					TR = Tape Reel
	TN = Tinned				

PCB Connectors (SMD)

Part No.: **A25152**

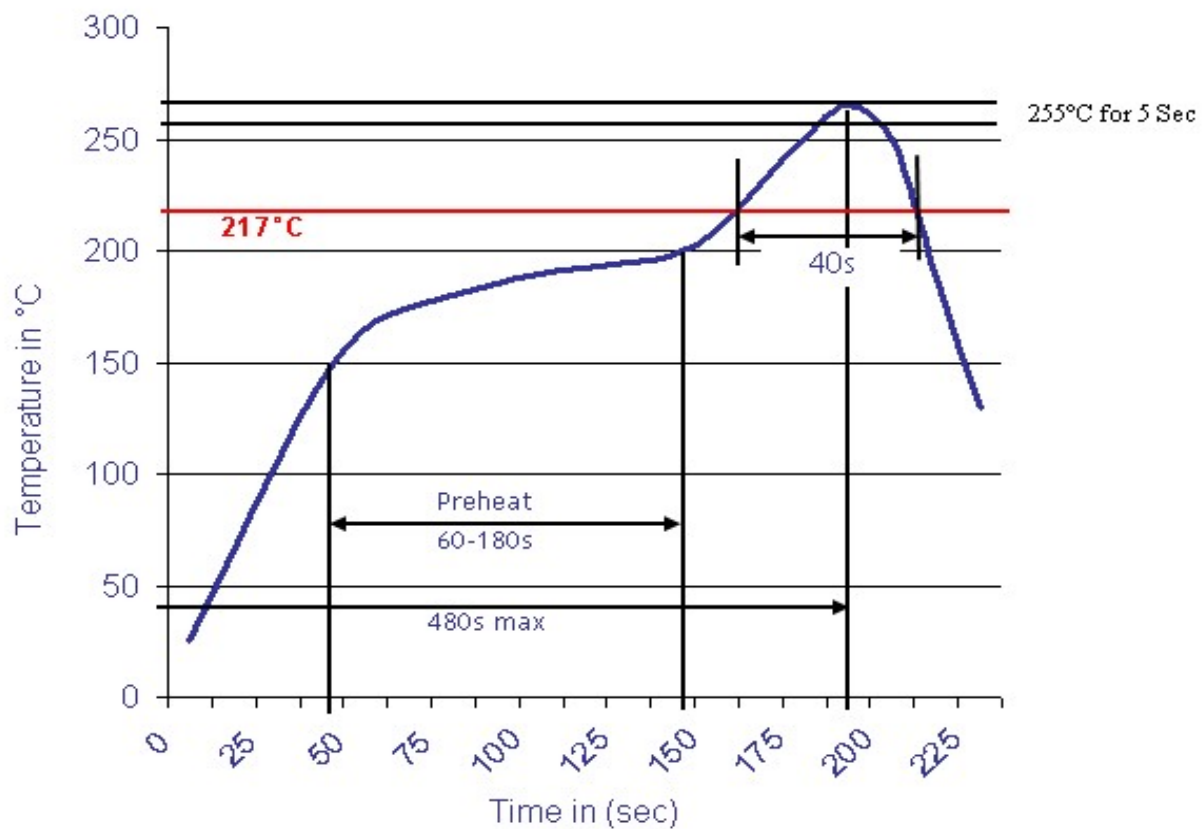
DRW:	Jason	CHKD	Wilson	MATL:	Wilson	TOLERANCE	Mason	DATE	14.04.2024
APPD:	Schumi			FINISH	Jamy		Sheet No.		2 from 3

Customer:



Soldering Profile Curve

Classification Reflow Profile (JEDEC J-STD-020C)



PCB Connectors (SMD)	
Part No.:	A25152
Customer:	

DRW:	Jason	CHKD	Wilson	MATL:	Wilson	TOLERANCE	Mason	DATE	14.04.2024
APPD:	Schumi			FINISH	Jamy		Sheet No.		3 from 3