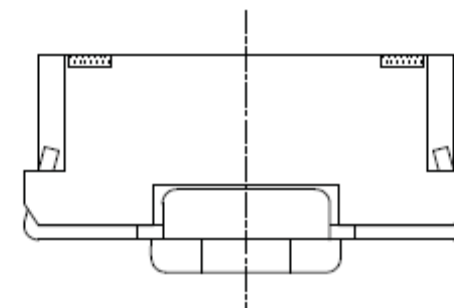
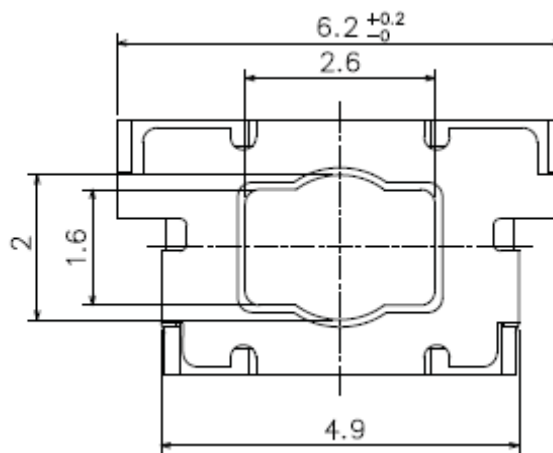
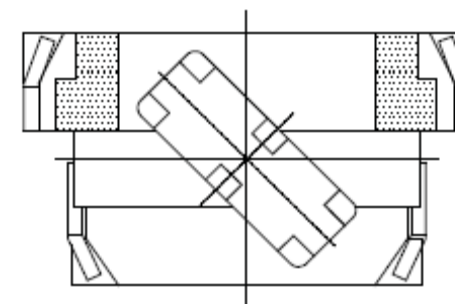
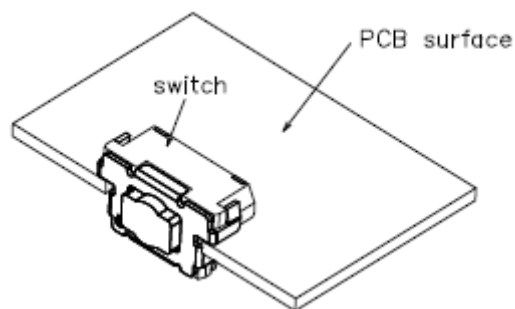




SPECIFICATION:

Voltage Rating:	12VDC
Current Rating:	50mA
Mechanical Life:	10000 cycles
Contact Resistance:	100m Ω max. (initial)
Insulation Resistance:	100M Ω min. 500VDC
Dielectric Strength:	250VAC/1min.
Operating Temperature:	.-20°C ~ +70°C
Storage Temperature:	.-30°C ~ +80°C
Operating Force:	500gr ± 100gr
Travel:	0,15mm ± 0,1mm

Drawing



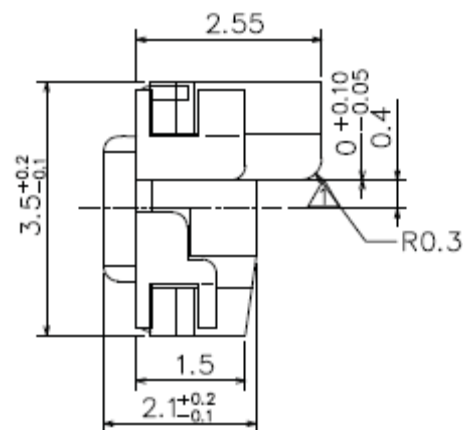
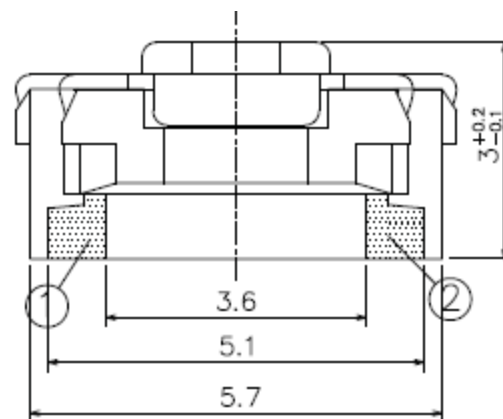
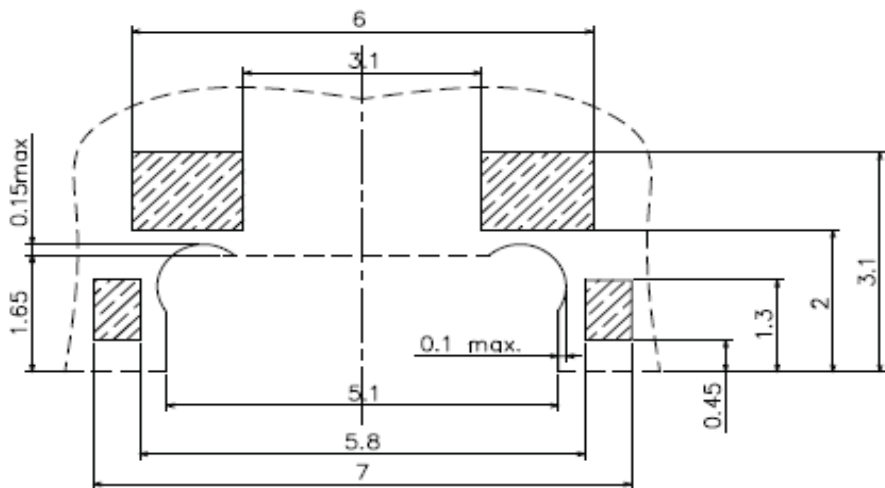
No	Part Name	Material	Finishing
1	Case	Liquid Crystal Polymer	UL94V-0 (Black)
2	Terminal	Brass	Ag Plate
3	Contact	Stainless Steel	Ag Plate
4	Dust Cover	PI Film	
5	Stem	Liquid Crystal Polymer	UL94V-0 (Black)
6	Cover	Stainless Steel	Ag Plate

SMT Tact Switch Frontside Sink Type	
Part No.:	Q12151
Customer:	

DRW:	Jason	CHKD	Wilson	MATL:	Wilson	TOLERANCE	Mason	DATE	01.07.2016
APPD:	Schumi			FINISH	Jamy		Sheet No.		1 from 4



P.C.B Mounting
pattern Dimension



SMT Tact Switch Frontside Sink Type	
Part No.:	Q12151
Customer:	

DRW:	Jason	CHKD	Wilson	MATL:	Wilson	TOLERANCE	Mason	DATE	01.07.2016
APPD:	Schumi			FINISH	Jamy		Sheet No.	2 from 4	

EDCON-COMPONENTS



Ordering Informations

Serie	Total length w. Body	Special function	Operating Force	Polarisation Peg	Electrical life	Special function	ROHS	Packing		
Q12151	030	N	501	N	103	N	R	TR		

026 = 2,6mm	N = No special function	501 = 500gr	N = without Peg	103 = 10000 Cycles	N = No special function	N = Non ROHS	TR = Tape/Reel Packing
						R = ROHS conform	TU = Tube Packing
							BU = Bulk Ware

**SMT Tact Switch
Frontside Sink Type**

Part No.: **Q12151**

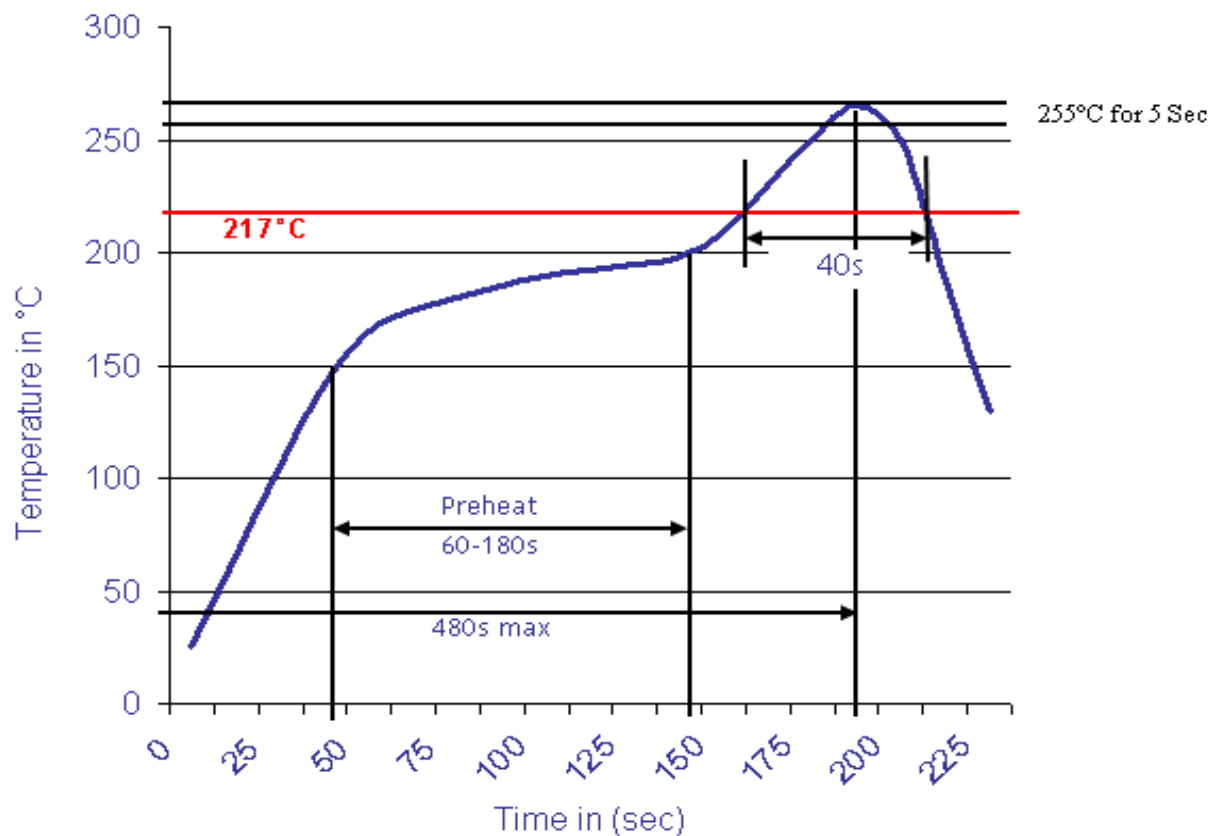
DRW:	Jason	CHKD	Wilson	MATL:	Wilson	TOLERANCE	Mason	DATE	01.07.2016
APPD:	Schumi			FINISH	Jamy		Sheet No.		3 from 4

Customer:



Soldering Profile Curve

Classification Reflow Profile (JEDEC J-STD-020C)



SMT Tact Switch Frontside Sink Type	
Part No.:	Q12151
Customer:	

DRW:	Jason	CHKD	Wilson	MATL:	Wilson	TOLERANCE	Mason	DATE	01.07.2016
APPD:	Schumi			FINISH	Jamy		Sheet No.	4 from 4	