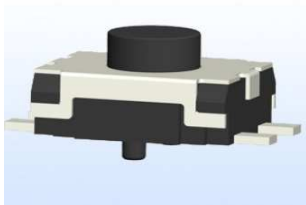


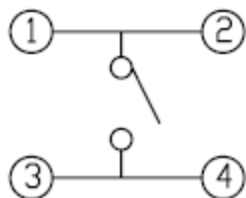
# EDCON-COMPONENTS



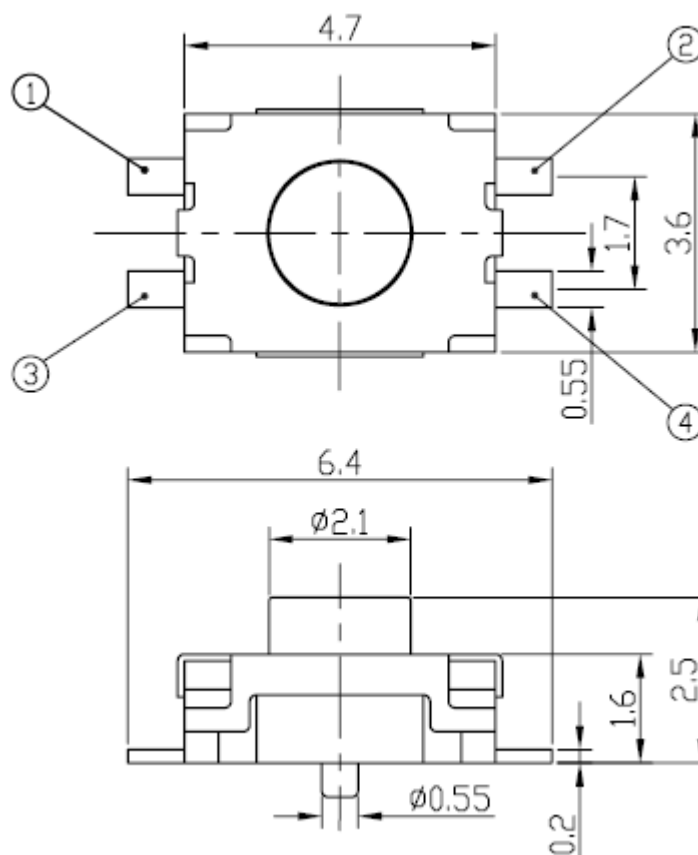
## SPECIFICATION:

Current Rating:	50mA / 12VDC
Insulator Resistance:	100 Megaohm min.
Dielectric Withstanding:	AC 250V
Operating Temperature:	.-30°C to +85°C
Travel:	0,45mm ± 0,1mm
Insulator Material:	Nylon
Cover:	PBS-Strip
Contact Plating:	Stainless Steel Silver plated
Terminal:	Brass Silver plated
Contact Resistance:	100mΩ max.

## Schematic



## Drawing



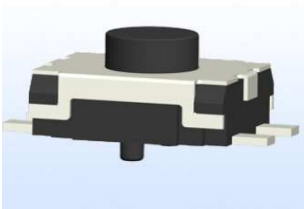
**SMT TACT SWITCH**  
**4,7x3,6mm**

Part No.: **Q12142**

Customer:

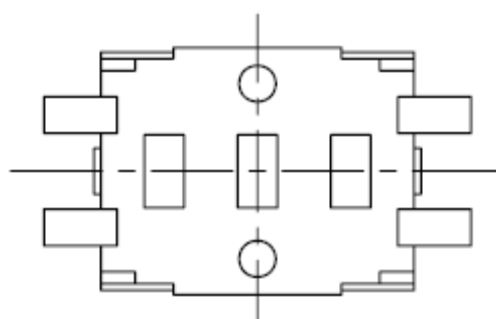
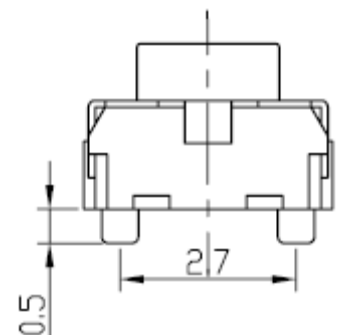
DRW:	Jason	CHKD	Wilson	MATL:	Wilson	TOLERANCE	Mason	DATE	16.02.2015
APPD:	Schumi			FINISH	Jamy		Sheet No.		1 from 4

**EDCON-COMPONENTS**



**Knob Height Specifications ( other specification on request )    Layout**

Knob Order Code L	Height (mm)
025	2,5mm
xxx	xxx



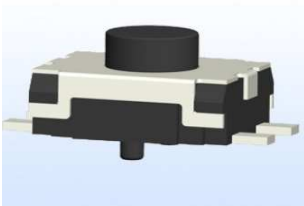
<b>SMT TACT SWITCH 4,7x3,6mm</b>	
Part No.:	<b>Q12142</b>
Customer:	

DRW:	Jason	CHKD	Wilson	MATL:	Wilson	TOLERANCE	Mason	DATE	16.02.2015
APPD:	Schumi			FINISH	Jamy			Sheet No.	2 from 4

[www.edcon-components.com](http://www.edcon-components.com)

email: [info@edcon-components.com](mailto:info@edcon-components.com)

# EDCON-COMPONENTS



## Ordering Informations

Serie	Total height w. Body	Fill with 0	Operating Force	Polarisation Peg	Electrical life	Fill with 0	ROHS	Packing		
<b>Q12142</b>	<b>025</b>	<b>X</b>	<b>251</b>	<b>N</b>	<b>104</b>	<b>X</b>	<b>R</b>	<b>BU</b>		

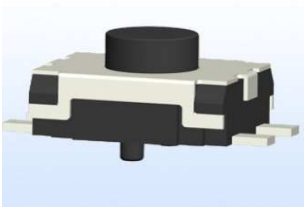
xxx= Look Knob Order Code L	X= no function	251= 250gr	N= without Peg	104= 100000 cycles	X= no function	N= non ROHS	BU= Bulk Ware
		331= 330gr				R= ROHS conform	
		101 = 100gr					
		161= 160gr					

**SMT TACT SWITCH  
4,7x3,6mm**

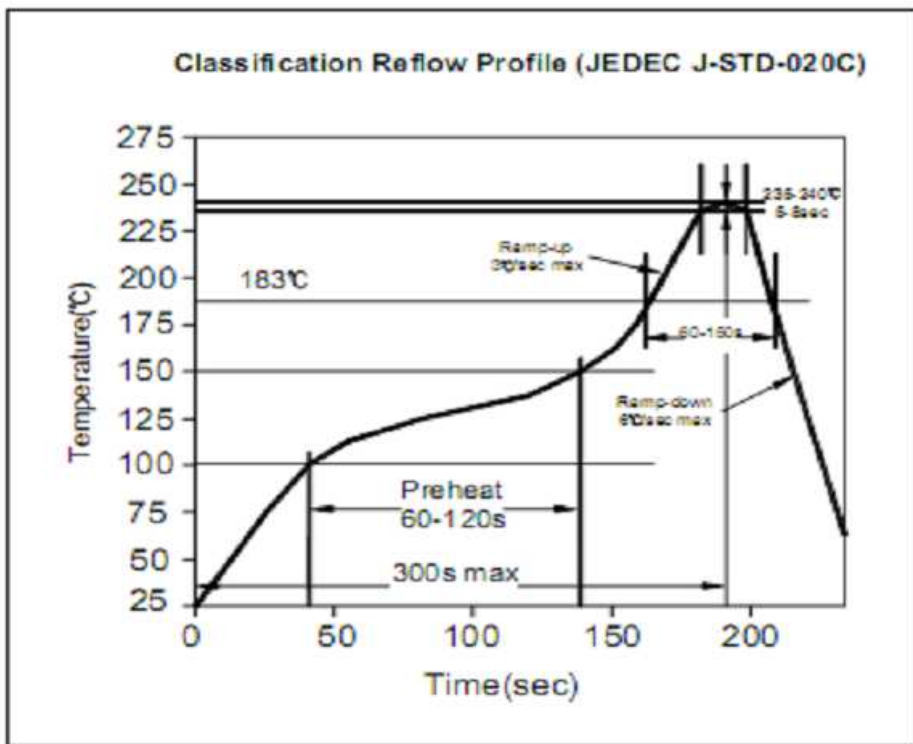
Part No.: **Q12142**

DRW:	Jason	CHKD	Wilson	MATL:	Wilson	TOLERANCE	Mason	DATE	16.02.2015
APPD:	Schumi			FINISH	Jamy		Sheet No.		3 from 4

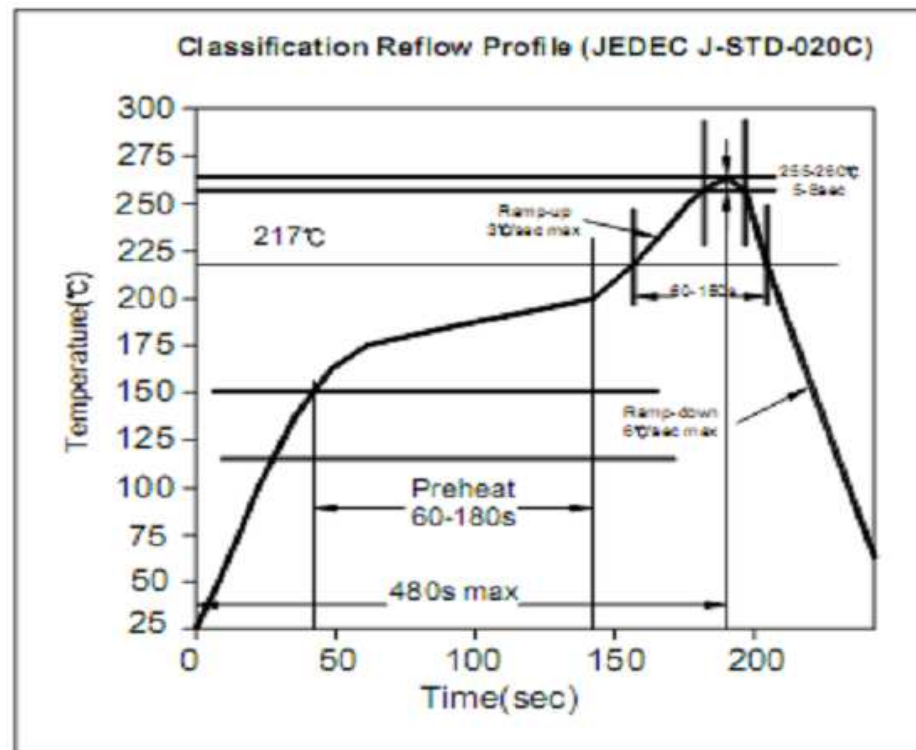
Customer:



Soldering Profile for Lead Soldering



Soldering Profile for Lead Free Soldering



**SMT TACT SWITCH  
4,7x3,6mm**

Part No.: **Q12142**

DRW:	Jason	CHKD	Wilson	MATL:	Wilson	TOLERANCE	Mason	DATE	16.02.2015
APPD:	Schumi			FINISH	Jamy		Sheet No.	4 from 4	Customer: