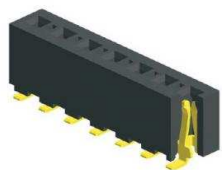


EDCON-COMPONENTS



Contact

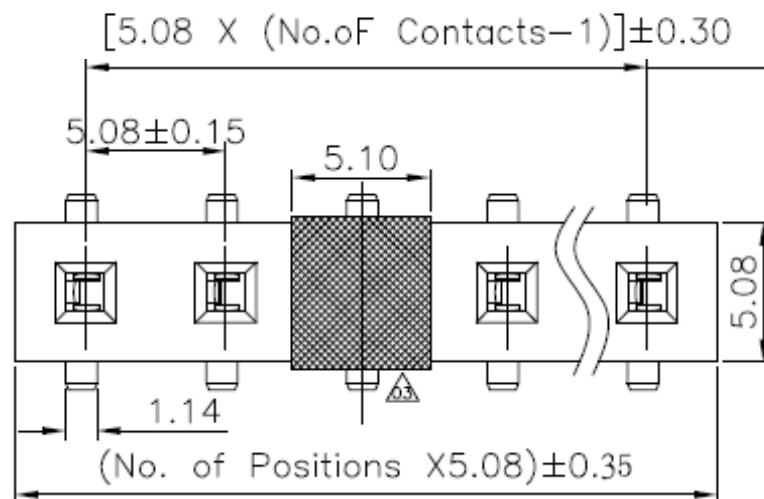
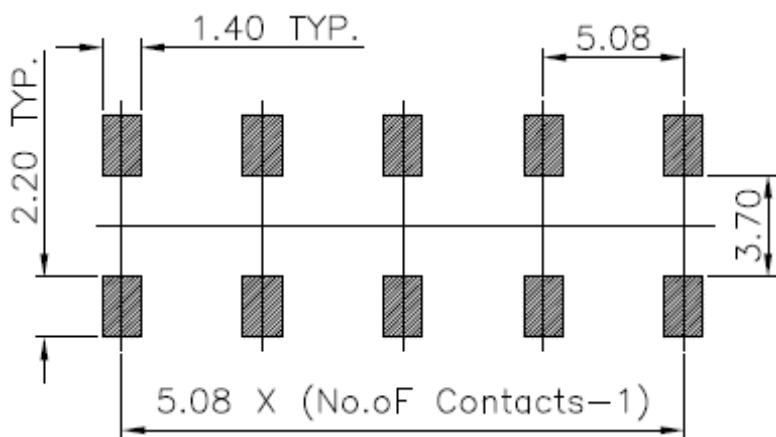
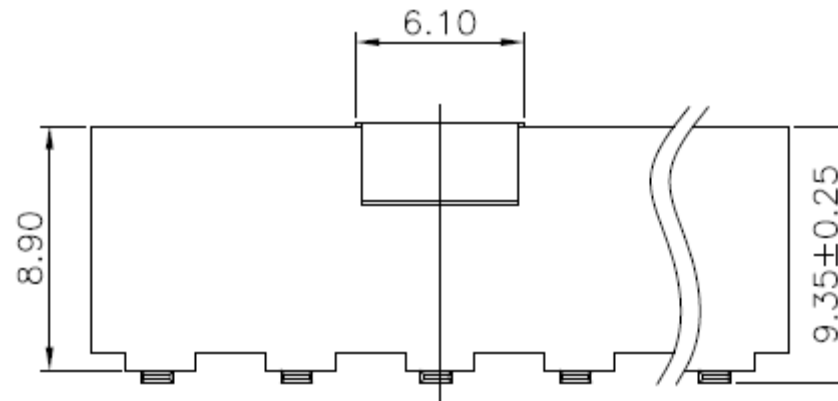
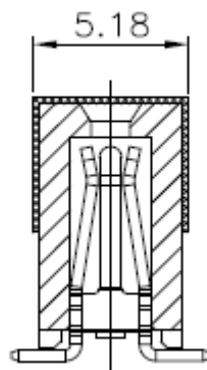


Specifications

Current Rating:	7,9 Ampere
Insulator Resistance:	1000 Megaohm min.
Contact Resistance	20m Ohm max.
Dielectric Withstanding:	AC 1000V
Operating Temperature:	.-40°C to +105°C
Contact Material:	Brass
Insulator Material:	Polyester / LCP or Equivalent Mat
Contact:	Three Finger Power Contact
Contact Plating:	Tin, Gold or Selective Plated
Standard:	Gold Flash / Tin plated

P.C.B Layout

Drawing



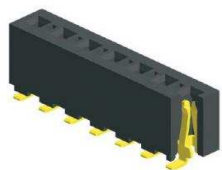
**SMT Female Header Pitch
5,08mm**

Part No.: **T27H002-**

Customer:

DRW:	Jason	CHKD	Wilson	MATL:	Wilson	TOLERANCE	Mason	DATE	17.03.2015
APPD:	Schumi			FINISH	Jamy		Sheet No.		1 from 4

EDCON-COMPONENTS



Contact

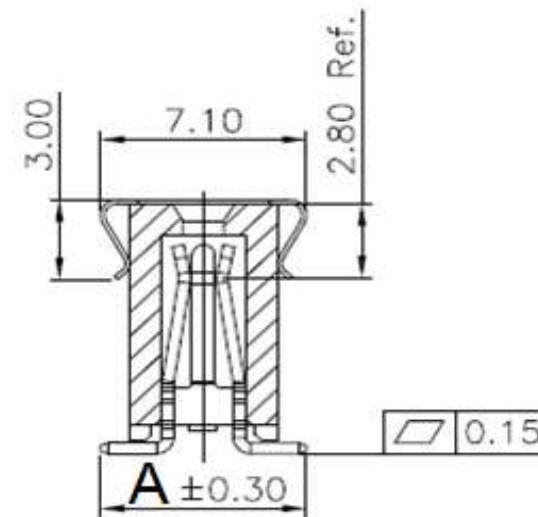


Pin Code length table free configuration

Order Code	Dimension (mm)			
	A			
A01	7,10			
A02				
A03				
A04				
A05				
A06				
A07				
A08				
A09				
A10				
A11				
A12				
A13				
A14				
A15				
A16				
A17				
A18				
A19				
A20				
A21				
A22				

Order Code	Dimension (mm)			
	A			
A23				
A24				
A25				
A26				
A27				
A28				
A29				
A30				
A31				
A32				
A33				
A34				
A35				
A36				
A37				
A38				
A39				
A40				
A41				
A42				
A43				
A44				

Current Rating		
Ambient Temp	2Pin	4Pin
20°C	25A	22A
40°C	24A	19A
60°C	17A	15,5A
75°C	14,40	12,7A
105°C	7,90	7,90



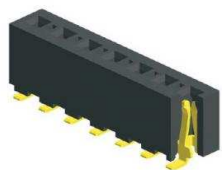
**SMT Female Header Pitch
5,08mm**

Part No.: **T27H002-**

Customer:

DRW:	Jason	CHKD	Wilson	MATL:	Wilson	TOLERANCE	Mason	DATE	17.03.2015
APPD:	Schumi			FINISH	Jamy		Sheet No.	2 from 4	

EDCON-COMPONENTS



Contact



Ordering Informations

Serie	No. of Pos.	Construction	Contact Plating	Material	Special function	Pin Length Code	ROHS	Packing		
T27H002-	XX	SS	G0	LC	0	A01	R	TC		

XX = Total Pin 02 ~ 24	ST = Straight THT	G0 = Gold Flash (Standard)	PB = P.B.T	0 = no function	siehe Table No. 1	N =NO ROHS conform	BU = Bulk (Standard)
		T0 = Tin plated	NY = Nylon-6T			R = ROHS conform	TU = Tube w/o Cap
		GA = 10µ Gold Plating	LC = LCP				TC = Tube w. pic and Place Cap
		GB = 15µ Gold Plating					TY = Tray packing w/o Cap
		GC = 20µ Gold Plating					TR = Tape/Reel w. pic and Place Cap
		S0 = Selectiv Plating Gold Flash / Tin					
		TN = Tin Plated					

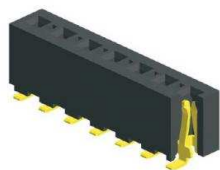
**SMT Female Header Pitch
5,08mm**

Part No.: **T27H002-**

DRW:	Jason	CHKD	Wilson	MATL:	Wilson	TOLERANCE	Mason	DATE	17.03.2015
APPD:	Schumi			FINISH	Jamy		Sheet No.		3 from 4

Customer:

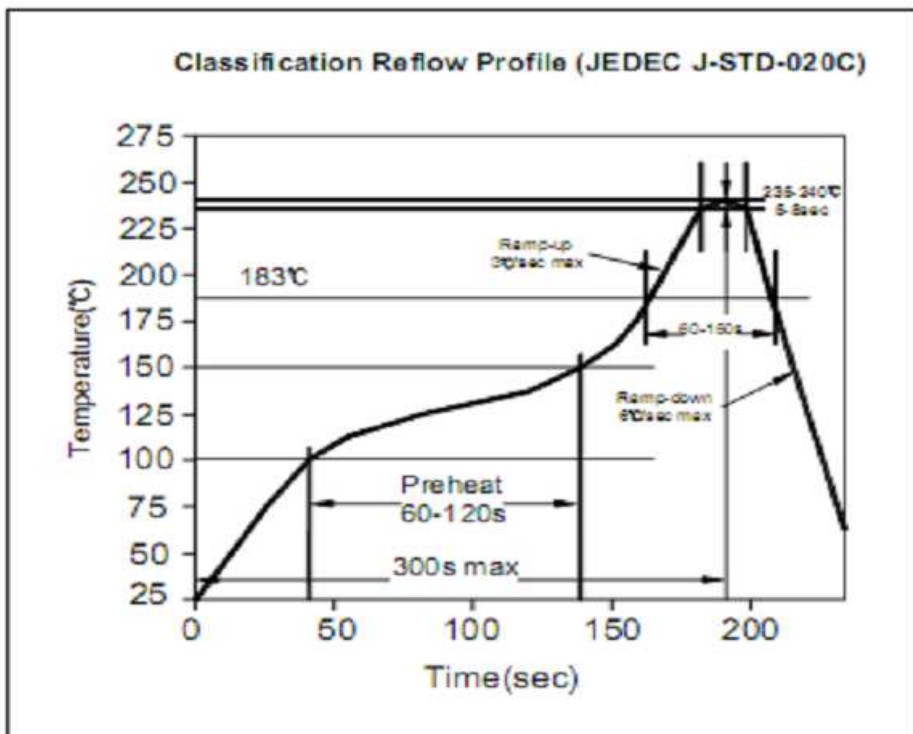
EDCON-COMPONENTS



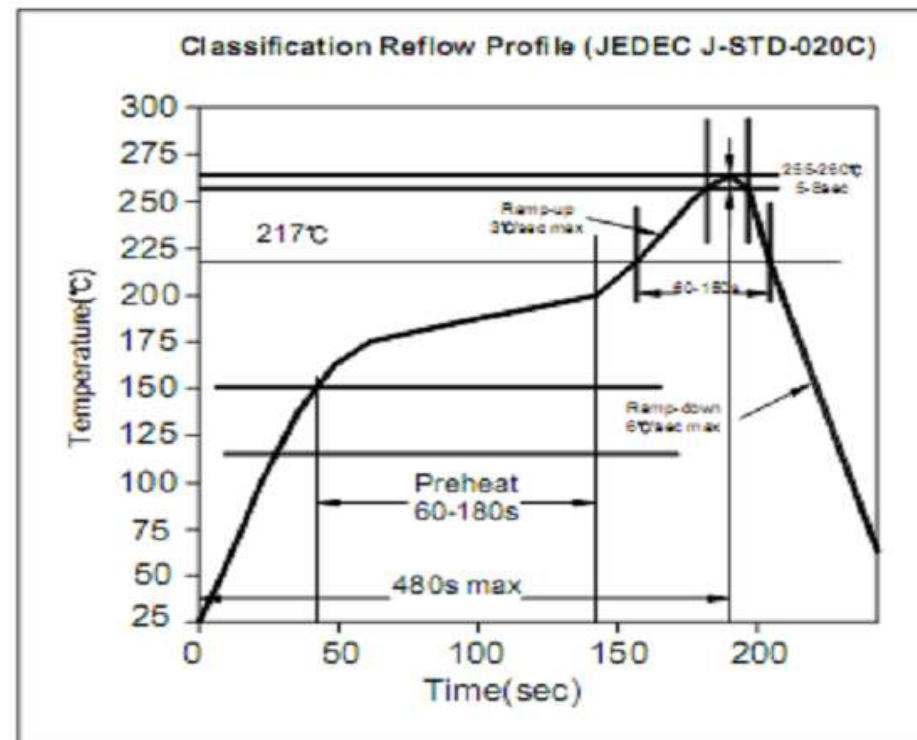
Contact



Soldering Profile for Lead Soldering (P.B.T.)



Soldering Profile for Lead Free Soldering (Nylon 6T)



**SMT Female Header Pitch
5,08mm**

Part No.: **T27H002-**

DRW:	Jason	CHKD	Wilson	MATL:	Wilson	TOLERANCE	Mason	DATE	17.03.2015
APPD:	Schumi			FINISH	Jamy		Sheet No.	4 from 4	Customer: