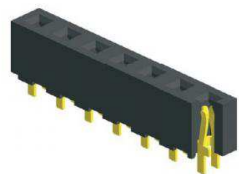


EDCON-COMPONENTS



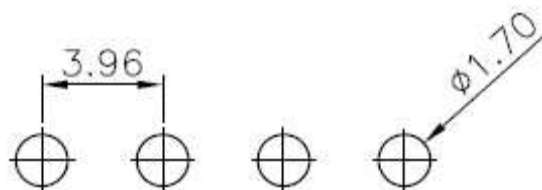
Contact



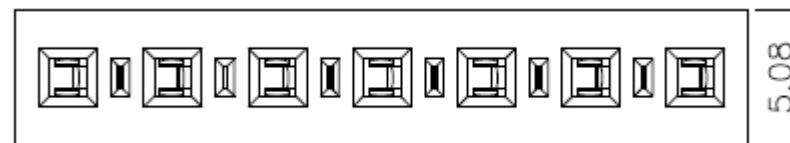
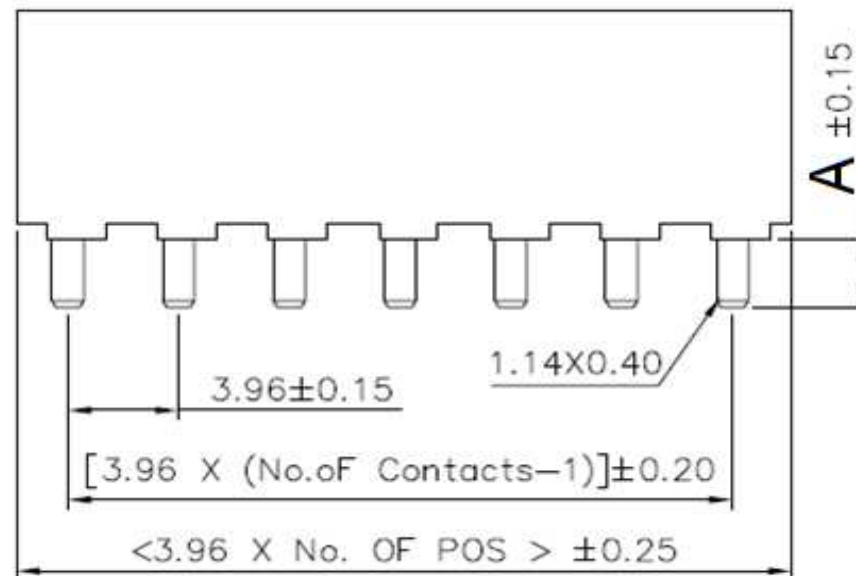
Specifications

Current Rating:	7,9 Ampere
Insulator Resistance:	1000 Megaohm min.
Contact Resistance:	20m Ohm max.
Dielectric Withstanding:	AC 1000V
Operating Temperature:	.-40°C to +105°C
Contact Material:	Brass
Insulator Material:	Polyester / LCP or Equivalent Mat
Contact:	Three Finger Power Contact
Contact Plating:	Tin, Gold or Selective Plated
Standard:	Gold Flash / Tin plated

P.C.B Layout



Drawing



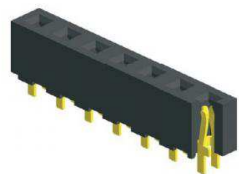
**THT Female Header Pitch
3,96mm**

Part No.: **T27G001-**

DRW:	Jason	CHKD	Wilson	MATL:	Wilson	TOLERANCE	Mason	DATE	17.03.2015
APPD:	Schumi			FINISH	Jamy		Sheet No.		1 from 4

Customer:

EDCON-COMPONENTS



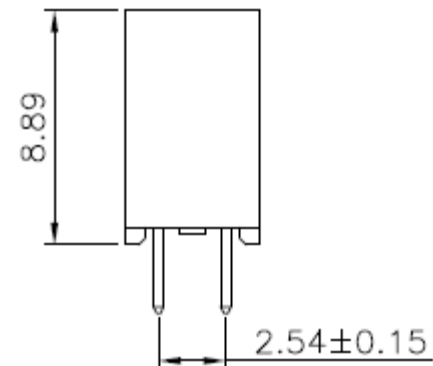
Contact



Pin Code length table free configuration

Order Code	Dimension (mm)			
	A			
A01	2,60			
A02				
A03				
A04				
A05				
A06				
A07				
A08				
A09				
A10				
A11				
A12				
A13				
A14				
A15				
A16				
A17				
A18				
A19				
A20				
A21				
A22				

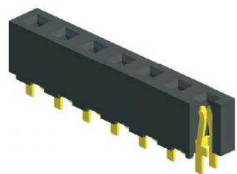
Order Code	Dimension (mm)			
	A			
A23				
A24				
A25				
A26				
A27				
A28				
A29				
A30				
A31				
A32				
A33				
A34				
A35				
A36				
A37				
A38				
A39				
A40				
A41				
A42				
A43				
A44				



THT Female Header Pitch 3,96mm	
Part No.:	T27G001-
Customer:	

DRW:	Jason	CHKD	Wilson	MATL:	Wilson	TOLERANCE	Mason	DATE	17.03.2015
APPD:	Schumi			FINISH	Jamy		Sheet No.	2 from 4	

EDCON-COMPONENTS



Contact



Ordering Informations

Serie	No. of Pos.	Construction	Contact Plating	Material	Special function	Pin Length Code	ROHS	Packing		
T27G001-	XX	ST	G0	LC	0	A01	R	BU		

XX= Total Pin 02 ~ 24	ST= Straight THT	G0= Gold Flash (Standard)	PB= P.B.T	0= no function	siehe Table No. 1	N= NO ROHS conform	BU= Bulk (Standard)
		T0= Tin plated	NY= Nylon-6T			R= ROHS conform	TU= Tube w/o Cap
		GA= 10µ Gold Plating	LC= LCP				TC= Tube w. pic and Place Cap
		GB= 15µ Gold Plating					TY= Tray packing w/o Cap
		GC= 20µ Gold Plating					TR= Tape/Reel w. pic and Place Cap
		S0= Selectiv Plating Gold Flash / Tin					
		TN= Tin Plated					

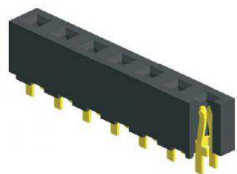
**THT Female Header Pitch
3,96mm**

Part No.: **T27G001-**

DRW:	Jason	CHKD	Wilson	MATL:	Wilson	TOLERANCE	Mason	DATE	17.03.2015
APPD:	Schumi			FINISH	Jamy		Sheet No.		3 from 4

Customer:

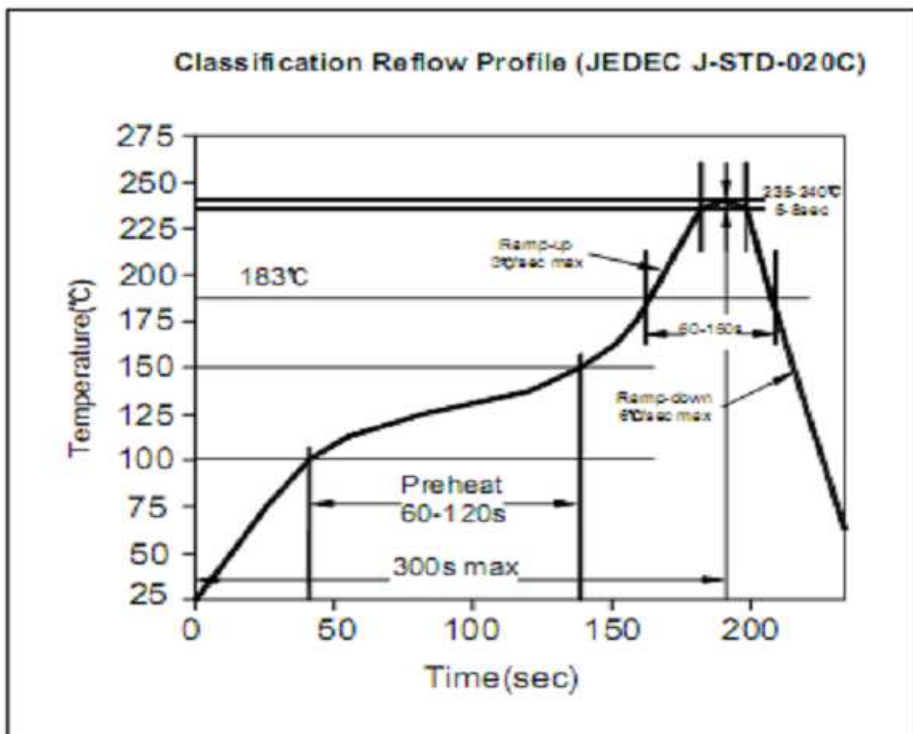
EDCON-COMPONENTS



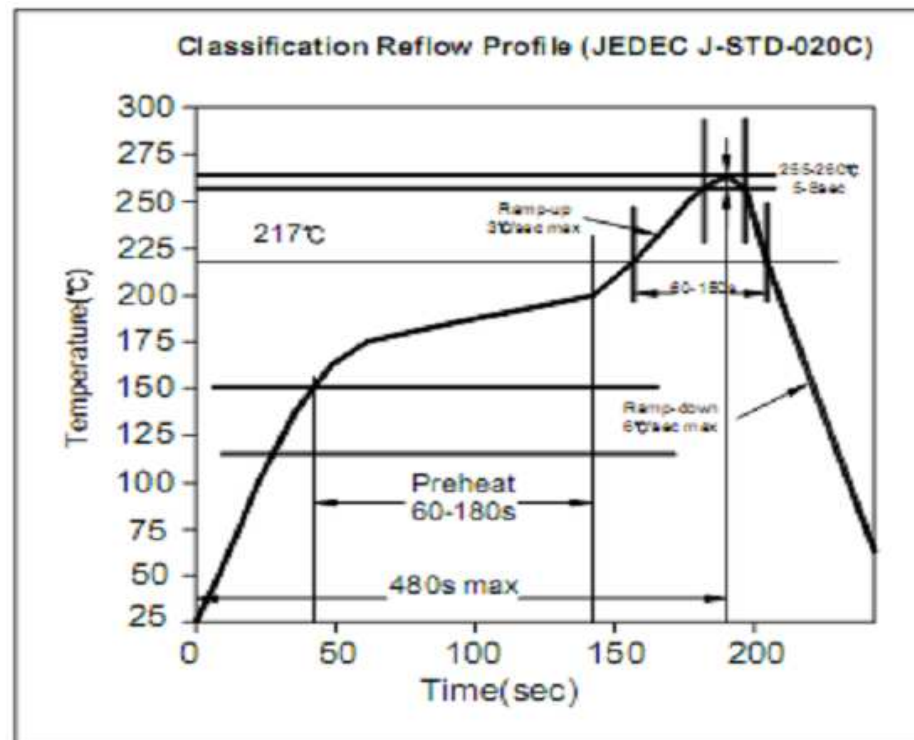
Contact



Soldering Profile for Lead Soldering (P.B.T.)



Soldering Profile for Lead Free Soldering (Nylon 6T)



**THT Female Header Pitch
3,96mm**

Part No.: **T27G001-**

DRW:	Jason	CHKD	Wilson	MATL:	Wilson	TOLERANCE	Mason	DATE	17.03.2015	Customer:
APPD:	Schumi			FINISH	Jamy		Sheet No.	4 from 4		