

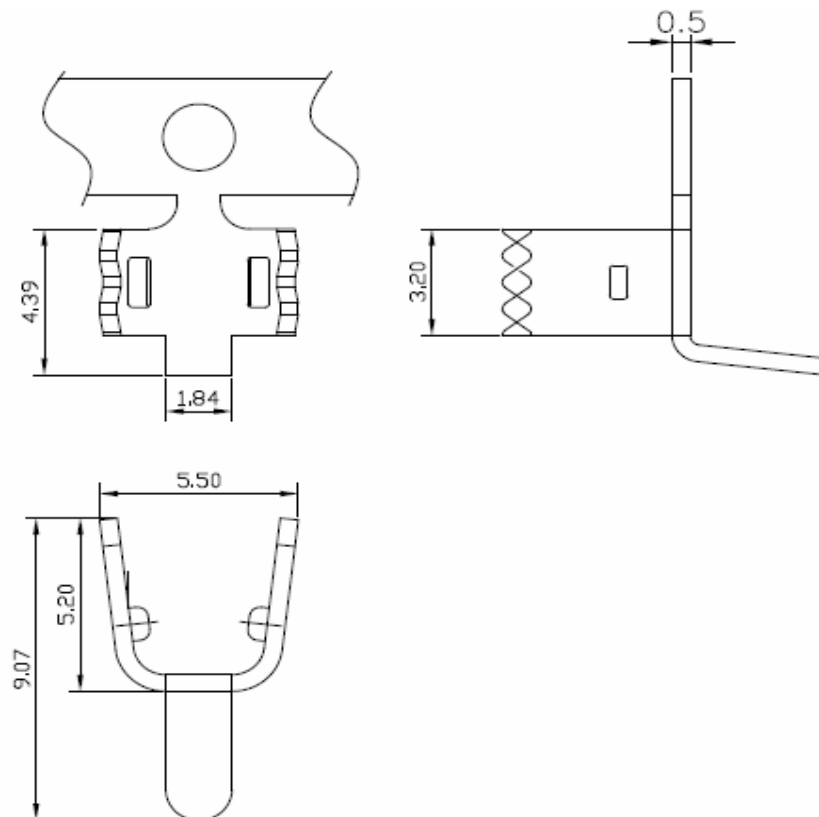
# EDCON-COMPONENTS



## Discription Terminal

## Drawing (mm)

Material: Brass



Dimension (mm)

Size Type	Material	Thickness	Wire Range	QTY/Reel
A	Brass	0,5	AWG 8~14	3000

<b>Cord End Terminal for Cable assembling</b>
Part No.:
Customer:

DRW:	Jason	CHKD	Wilson	MATL:	Wilson	TOLERANCE	Mason	DATE	30.10.2010
APPD:	Schumi			FINISH	Jamy		Sheet No.		1 from 2

[www.edcon-components.com](http://www.edcon-components.com)

email: [info@edcon-components.com](mailto:info@edcon-components.com)

# EDCON-COMPONENTS



## Ordering Informations

### Terminal

Serie	Size	ROHS	Packing			
N38195	A	R	BU			

A= Size A	R= ROHS Conform	BU= Bulk-Ware
	N= NON ROHS Conform	

**Cord End Terminal for  
Cable assembling**

Part No.: **N38195**

Customer:

DRW:	Jason	CHKD	Wilson	MATL:	Wilson	TOLERANCE	Mason	DATE	30.10.2010
APPD:	Schumi			FINISH	Jamy		Sheet No.		2 from 2