

# EDCON-COMPONENTS

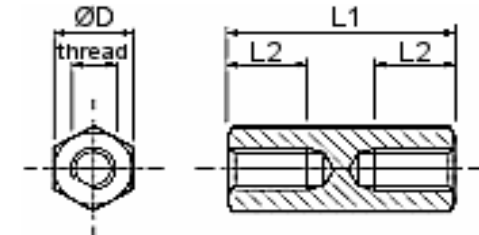


### Technical Dcription

Material: Stainless Steel / SUS303  
TYPE Female/ Female

Inside Thread: M6

### Drawing



Dimensions (mm)			
Order Code	L1	L2	OD
A010	10	4	10
A011	11	4	10
A012	12	5	10
A013	13	5	10
A014	14	5	10
A015	15	6	10
A016	16	6	10
A017	17	8	10
A018	18	8	10
A019	19	8	10
A020	20	8	10
A025	25	12	10
A030	30	12	10
A035	35	12	10
A040	40	12	10
A045	45	12	10

Dimensions (mm)			
Order Code	L1	L2	OD
A050	50	12	10
A055	55	12	10
A060	60	12	10
A065	65	12	10
A070	70	12	10
<b>Other length please contact EDCON</b>			

<b>Hexagonal Spacers Material Stainless Steel Size M6</b>	
Part No.:	<b>N43045</b>
Customer:	

DRW:	Jason	CHKD	Wilson	MATL:	Wilson	TOLERANCE	Mason	DATE	10.04.2009
APPD:	Schumi			FINISH	Jamy		Sheet No.	1 from 2	

# EDCON-COMPONENTS



## Ordering Informations

Serie	Length Code	Material	ROHS	Packing		
N43045	A005	SS	R	BU101		

A005 ~ xxxx	SS= Stainless Steel	R= ROHS Conform	BU101= Bulk-Ware 100PCS
		N= NON ROHS Conform	

<b>Hexagonal Spacers Material Stainless Steel Size M6</b>
Part No.: <b>N43045</b>

DRW:	Jason	CHKD	Wilson	MATL:	Wilson	TOLERANCE	Mason	DATE	10.04.2009	Customer:
APPD:	Schumi			FINISH	Jamy		Sheet No.	2 from 2		