

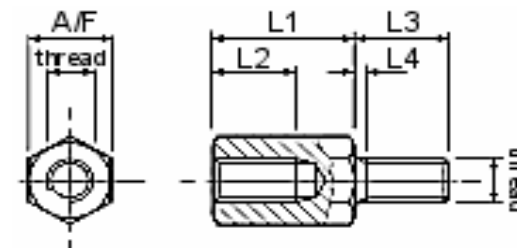
EDCON-COMPONENTS



Technical Description

Material: Steel / 12L14
 TYPE: Male/ Female
 Outside Thread: M8
 Inside Thread: M8

Drawing



Dimensions (mm)					
Order Code	L1	L2	L3	L4	A/F
A010	10	8	14	2,5	13
A011	11	8	14	2,5	13
A012	12	8	14	2,5	13
A013	13	8	14	2,5	13
A014	14	8	14	2,5	13
A015	15	8	14	2,5	13
A016	16	8	14	2,5	13
A017	17	8	14	2,5	13
A018	18	12	14	2,5	13
A019	19	12	14	2,5	13
A020	20	14	14	2,5	13
A025	25	14	14	2,5	13
A030	30	14	14	2,5	13
A035	35	14	14	2,5	13
A040	40	14	14	2,5	13
A045	45	14	14	2,5	13

Dimensions (mm)					
Order Code	L1	L2	L3	L4	A/F
A050	50	14	14	2,5	13
A055	55	14	14	2,5	13
A060	60	14	14	2,5	13
A065	65	14	14	2,5	13
A070	70	14	14	2,5	13
A075	75	14	14	2,5	13
A080	80	14	14	2,5	13
A085	85	14	14	2,5	13
A090	90	14	14	2,5	13
A095	95	14	14	2,5	13
A100	100	14	14	2,5	13
A120	120	14	14	2,5	13
Other length please contact EDCON					

Hexagonal Pillars Material Steel Size M8	
Part No.:	N43028
Customer:	

DRW:	Jason	CHKD	Wilson	MATL:	Wilson	TOLERANCE	Mason	DATE	10.04.2009
APPD:	Schumi			FINISH	Jamy		Sheet No.	1 from 2	

EDCON-COMPONENTS



Ordering Informations

Serie	Length Code	Material	ROHS	Packing		
N43028	A005	ST	R	BU101		

A005 ~ xxxx	ST= Steel	R= ROHS Conform	BU101= Bulk-Ware 100PCS
		N= NON ROHS Conform	BU102= Bulk-Ware 1000PCS

Hexagonal Pillars Material Steel Size M8
Part No.: N43028
Customer:

DRW:	Jason	CHKD	Wilson	MATL:	Wilson	TOLERANCE	Mason	DATE	10.04.2009
APPD:	Schumi			FINISH	Jamy		Sheet No.	2 from 2	

www.edcon-components.com

email: info@edcon-components.com