

RoHS compliant

REVISION DATA

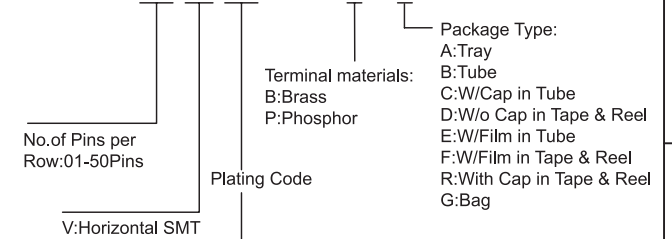
SYM	ECN	DESCRIPTION	DATE	APPROVED

NOTES:

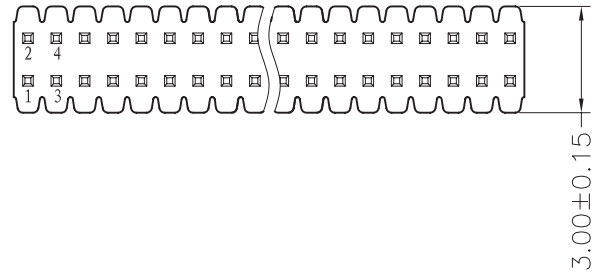
Current Rating:0.75AMP
 Contact Resistance:30mΩ max
 Withstand Voltage:500V AC/DC
 Insulation Resistance:1000MΩ min
 Operation Temperature:-40°C to +105°C
 Contact Material:Phosphor Bronze or Brass
 Contact plating:Au or Sn Over Ni
 Insulator Material:LCP+30%GF(UL94V-0)

HOW TO ORDER

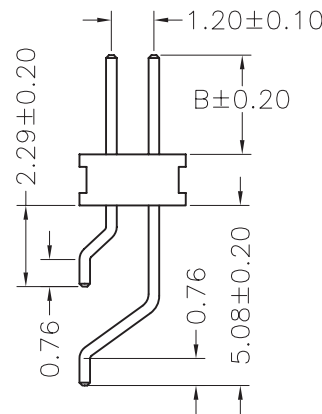
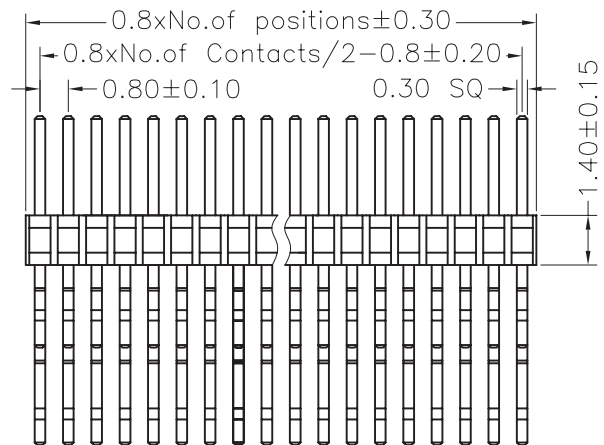
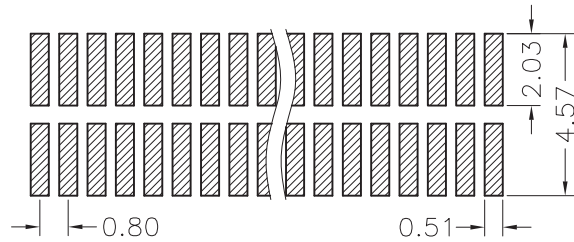
PE- D XX V XX - B - X - X



Full Gold Type	Selective Plated Type Gold Plated on Contact Area Tin Plated on Solder Area	Full Tin Type
00: Gold Flash	S0: Gold Flash, Tin 100u"	T1: Tin 100u"
01: Gold 3u"	S1: Gold 3u", Tin 100u"	T2: Tin 200u"
02: Gold 5u"	S2: Gold 5u", Tin 100u"	T3: Tin 150u"
03: Gold 10u"	S3: Gold 10u", Tin 100u"	MT: Matte Tin
04: Gold 15u"	S4: Gold 15u", Tin 100u"	
05: Gold 20u"	S5: Gold 20u", Tin 100u"	
06: Gold 30u"	S6: Gold 30u", Tin 100u"	



Recommended P.C.B Layout(Top Side)
 (PCB BOARD TOLERANCE±0.05)



TOLERANCE: ANGLE ±3' X.XXX ±0.15 X.XX ±0.25 X.X ±0.40 X. ±0.50	PROJECTON DATE DRAWN CHECKED APPROVED	 04-10-08' JXL	TITLE: 0.8mm*1.2mm Pin Header Dual Row Horizontal SMT H=1.4 PART NO: PE-DXXVXX-B-X-X REV: A1 UNIT: mm SCALE: 2:1 SIZE: A4
---	---	----------------------	---