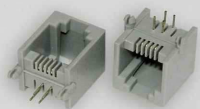


EDCON-COMPONENTS



Technical Discription

Electrical

Current Rating: 1,5A
 Voltage Rating: 125VAC
 Insulation Resistance: 500M Ω min.
 Contact Resistance: 30M Ω max.
 Withstanding Voltage: AC1000V RMS 50/60Hz 1min.

Mechanical

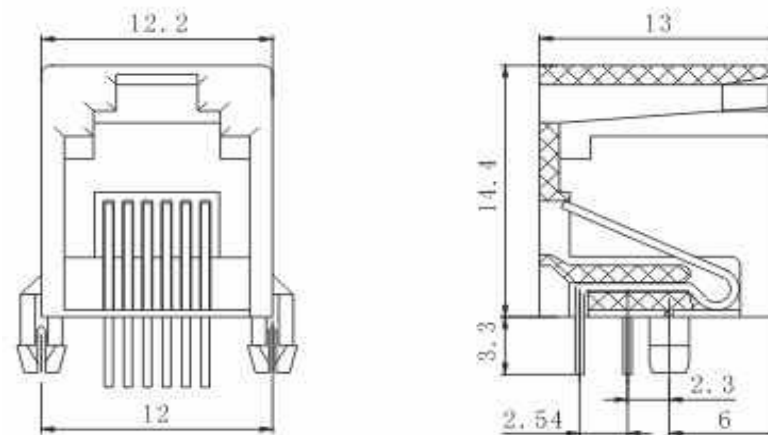
Insertion Force: 2,2Kg.F.max.
 Retention Strength: 7,7Kg.F min.beetween jack a. plug
 Durability: 600 mating cycles min.

Material

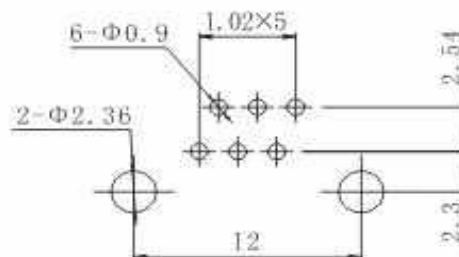
Housing: ABS RESIN (UL94V-0)
 PBT(UL94V-0 PA66(UÖ94V-0)
 PA46(UL94V-0)
 Diameter 0,45mm Phosphor
 Bronze Gold Plating over Nickel
 Contact wire: 0,35mm thickness phosphor
 bronze alloy selective Gold plating
 over nickel
 Shield 0,20~0,25mm thickness brass with
 tin plated
 Contact Plating Gold Flash, 3 μ / 6 μ / 15 μ / 30 μ 50 μ
 inch

Working Temperatur . -40°C ~ +70°C

Technical Drawing



PCB Layout



**PCB Modular Jack w/o.
shield w/o flange**

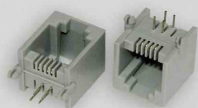
T91A11030

| | | | | | | | | | | |
|-------|-------|------|------|--------|------|-----------|-----------|----------|------------|-----------|
| DRW: | John | CHKD | Tony | MATL: | Tony | TOLERANCE | Su | DATE | 10.04.2009 | Customer: |
| APPD: | Jimmy | | | FINISH | Jeff | | Sheet No. | 1 from 3 | | |

www.edcon-components.com

email: info@edcon-components.com

EDCON-COMPONENTS



Ordering Informations

| Serie | No. Of. Positions | No. Of Contact | Contact Plating | Housing Material | ROHS | Packing | | | | |
|------------------|-------------------|----------------|-----------------|------------------|----------|-----------|--|--|--|--|
| T91A11030 | 6 | 6 | GF | PB | R | TY | | | | |

| | | | | | |
|-----------------|----------------------------|----------------------------|-----------------|----------------------------|-------------------------|
| 6= 6Pos. | 6= 6Pos. connecting | GF= Gold Flash | PB= PBT | R= ROHS conform | TY= Tray Packing |
| | | GA= 3μGold Plating | P4= PA46 | N= NON ROHS conform | BU= Bulk-Ware |
| | | GB= 6μGold Plating | P6= PA66 | | |
| | | GC= 15μGold Plating | AB= ABS | | |
| | | GD= 30μGold Plating | | | |
| | | GE= 50μGold Plating | | | |

| | |
|------------------------------------------------|------------------|
| PCB Modular Jack w/o. shield w/o flange | |
| Part No.: | T91A11030 |
| Customer: | |

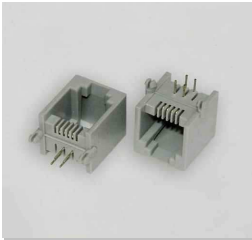
| | | | | | | | | | |
|-------|-------|------|------|--------|------|-----------|-----------|------|------------|
| DRW: | John | CHKD | Tony | MATL: | Tony | TOLERANCE | Su | DATE | 10.04.2009 |
| APPD: | Jimmy | | | FINISH | Jeff | | Sheet No. | | 2 from 3 |

www.edcon-components.com

email: info@edcon-components.com

Copyright by EDCON-COMPONENTS H.Schmitt

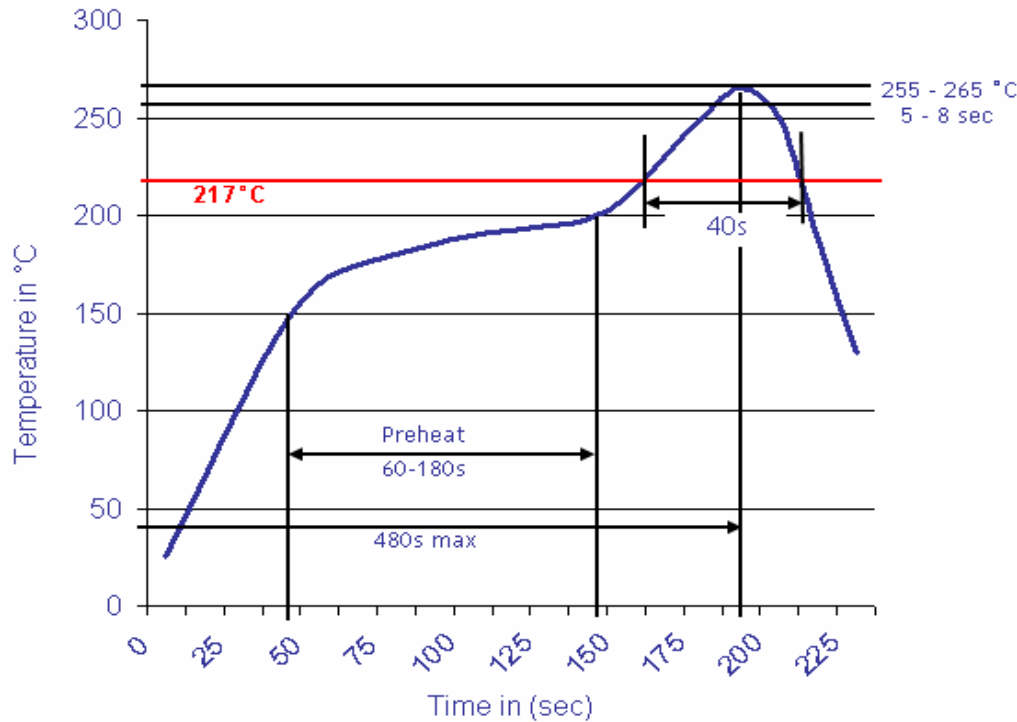
EDCON-COMPONENTS



Soldering Profile Curve

Lead Free Soldering Curve

Classification Reflow Profile (JEDEC J-STD-020C)



| | |
|------------------------------------------------|------------------|
| PCB Modular Jack w/o. shield w/o flange | |
| Part No.: | T91A11030 |
| Customer: | |

| | | | | | | | | | |
|-------|-------|------|------|--------|------|-----------|-----------|----------|------------|
| DRW: | John | CHKD | Tony | MATL: | Tony | TOLERANCE | Su | DATE | 10.04.2009 |
| APPD: | Jimmy | | | FINISH | Jeff | | Sheet No. | 3 from 3 | |