

EDCON-COMPONENTS

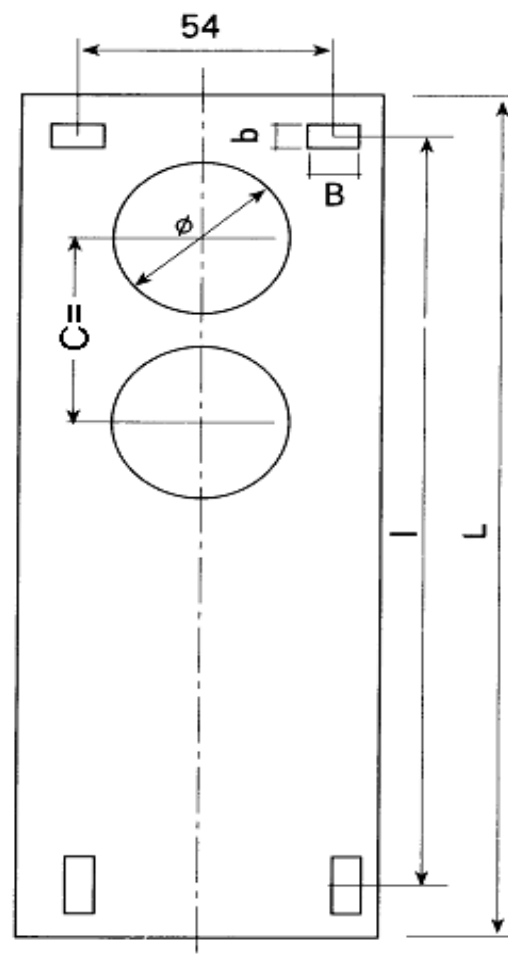


Technical Discription

Temperature Range:	ABS= -40°C ~ +80°C
Protection Degree	IP46
Screw Material:	M4 Stainless Steel

Internal Bosses Allow mounting of PCB horizontally or for connection of terminals, etc, into threaded insert.
 Wall mounting holes and cover attaching screws are outside the sealing area thus preventing ingress of moisture and dust

Dimension (mm)					
L	Length		195		
	Width		72		
	Height		66		
I			161		
C			40		
b			4,5		
B			6		



4Hole Pushbutton Box	
Part No.:	H14033
Customer:	

DRW:	Jason	CHKD	Wilson	MATL:	Wilson	TOLERANCE	Mason	DATE	25.05.2017
APPD:	Schumi			FINISH	Jamy		Sheet No.		1 from 2

EDCON-COMPONENTS



Ordering Informations

Serie	Material Base	Color Base	Material Cover	Color Cover	Push Button Hole Size	ROHS	Packing			
-------	---------------	------------	----------------	-------------	-----------------------	------	---------	--	--	--

H14033	-	A	B	A	L	A	R	S			
---------------	---	----------	----------	----------	----------	----------	----------	----------	--	--	--

A= ABS	L= Light Gray	A= ABS	L= Light Gray	A= 22mm	R= ROHS Conform	S= Standard Packing
	B= Black		B= Black	B= 25mm	N= NON ROHS Conform	I= Individual Packing
			Y= Yellow			

4Hole Pushbutton Box

Part No.: **H14033**

DRW:	Jason	CHKD	Wilson	MATL:	Wilson	TOLERANCE	Mason	DATE	25.05.2017
APPD:	Schumi			FINISH	Jamy		Sheet No.		2 from 2

Customer: