

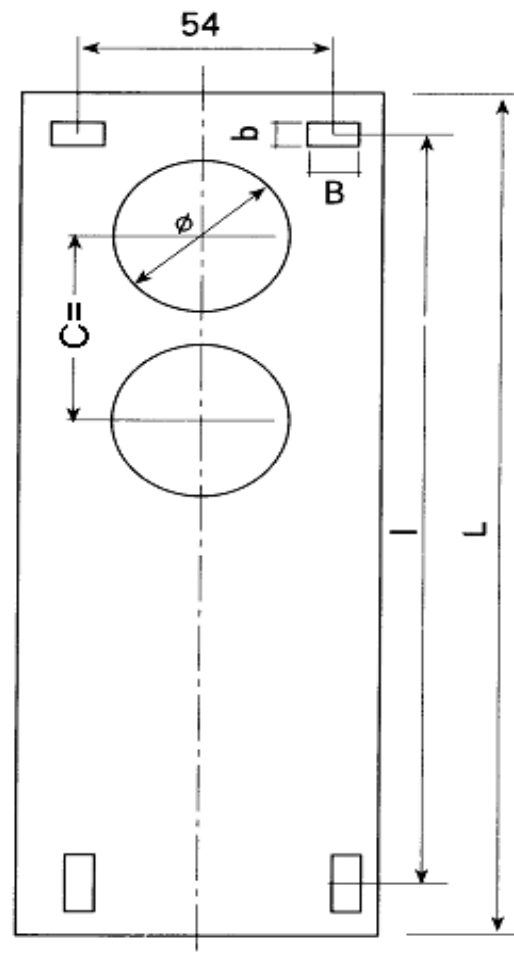
# EDCON-COMPONENTS



## Technical Discription

Temperature Range:	ABS= -40°C ~ +80°C
Protection Degree	IP46
Screw Material:	M4 Stainless Steel

Internal Bosses Allow mounting of PCB horizontally or for connection of terminals, etc, into threaded insert.  
 Wall mounting holes and cover attaching screws are outside the sealing area thus preventing ingress of moisture and dust



Dimension (mm)					
<b>L</b>	Length		150		
	Width		72		
	Height		66		
<b>I</b>			115		
<b>C</b>			40		
<b>b</b>			4,5		
<b>B</b>			6		

<b>3Hole Pushbutton Box</b>	
Part No.:	<b>H14032</b>
Customer:	

DRW:	Jason	CHKD	Wilson	MATL:	Wilson	TOLERANCE	Mason	DATE	25.05.2017
APPD:	Schumi			FINISH	Jamy		Sheet No.		1 from 2

# EDCON-COMPONENTS



## Ordering Informations

Serie	Material Base	Color Base	Material Cover	Color Cover	Push Button Hole Size	ROHS	Packing			
-------	---------------	------------	----------------	-------------	-----------------------	------	---------	--	--	--

<b>H14032</b>	<b>A</b>	<b>B</b>	<b>A</b>	<b>L</b>	<b>A</b>	<b>R</b>	<b>S</b>			
---------------	----------	----------	----------	----------	----------	----------	----------	--	--	--

<b>A= ABS</b>	<b>L= Light Gray</b>	<b>A= ABS</b>	<b>L= Light Gray</b>	<b>A= 22mm</b>	<b>R= ROHS Conform</b>	<b>S= Standard Packing</b>
	<b>B= Black</b>		<b>B= Black</b>	<b>B= 25mm</b>	<b>N= NON ROHS Conform</b>	<b>I= Individual Packing</b>
			<b>Y= Yellow</b>			

**3Hole Pushbutton Box**

Part No.: **H14032**

Customer:

DRW:	Jason	CHKD	Wilson	MATL:	Wilson	TOLERANCE	Mason	DATE	25.05.2017
APPD:	Schumi			FINISH	Jamy		Sheet No.	2 from 2	