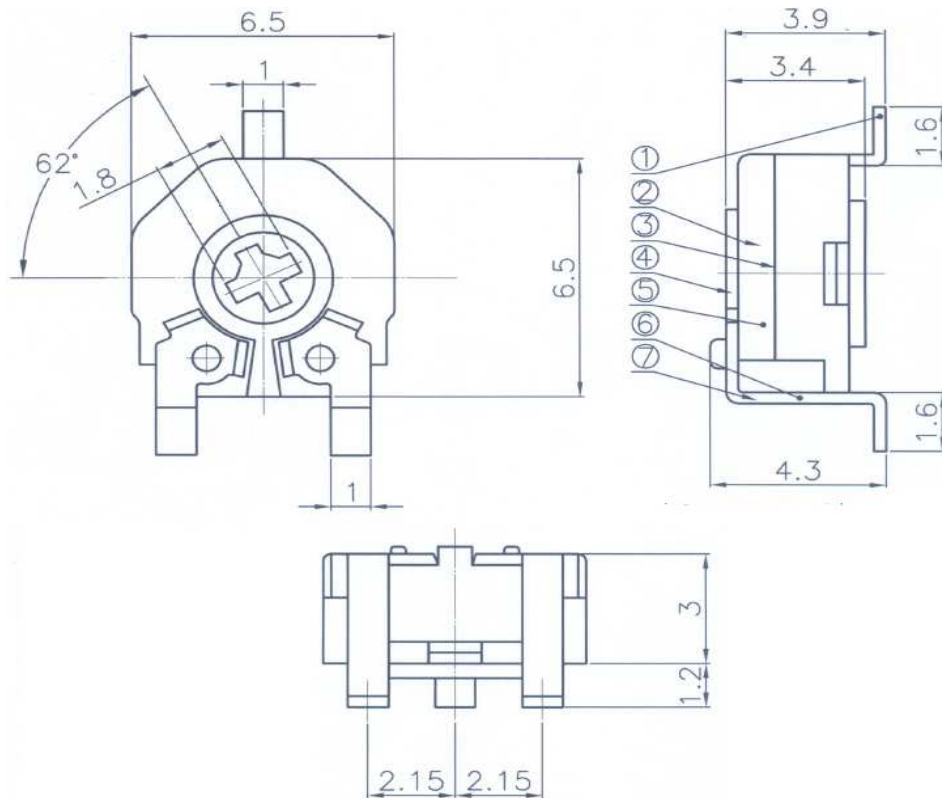


EDCON-COMPONENTS



Drawing



Specification

ELECTRICAL

Overall resistance	_____ Ω	
Tolerance	◦100Ω≤Rn<1kΩ: ± 30% ◦1kΩ≤Rn<1MΩ: ± 20% ◦1MΩ≤Rn≤5MΩ: ± 30%	
Linear taper (B):	100V DC	0.1W
Linear taper (A/C):	50V DC	0.05W
Noise	less than 47mV	
Operating temperature	-25°C ~ +70°C	
Contact resistance	less than 8%	
Residual resistance	Term. 1~2: less than 10Ω	
	Term. 2~3: less than 10Ω	

MECHANICAL

Total rotation angle	235°C ± 10°C
Electrical rotation angle	220°C ± 20°C
Rotational torque	0.2 ~ 2.0Ncm
Stop torque	4Ncm max.
Life test	10.000 Cycles



6.5mm SMD Single-Turn

Trimmer Type CA6V

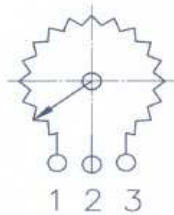
DRW:	Jason	Wilson	MATL:	Wilson	TOLERANCE	Mason	DATE	11.8.2009	Part No.:	X17007
APPD:	Schumi		FINISH	Jamy		Sheet No.		1 from 4	Customer:	

www.edcon-components.com

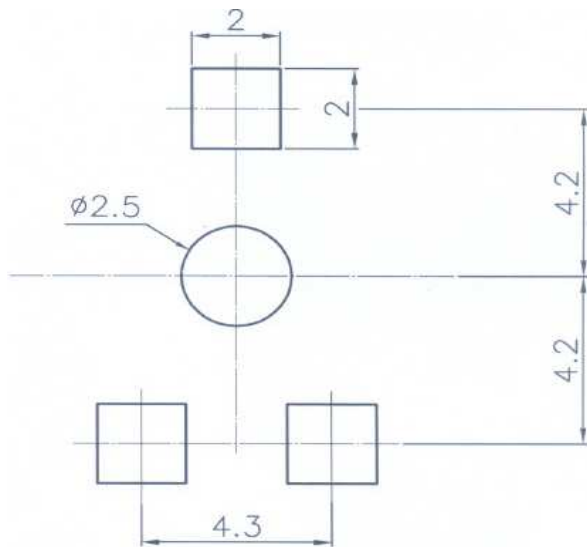
email: info@edcon-components.com



235° ROTATION



P.C.B. Layout



Position	Description	Material	Finishing
7	Terminal Lug	Brass	Ag Plating
6	Terminal Lug	Brass	Ag Plating
5	Basic	HTWFR52G30LX	No Plating
4	Block	HTWFR52G30LX	No Plating
3	Wiper	Brass t = 0.25	Silver Plating
2	Element	Glass Fibre t = 0.4	Carbo Plating
1	Bracket	Brass	Ag Plating

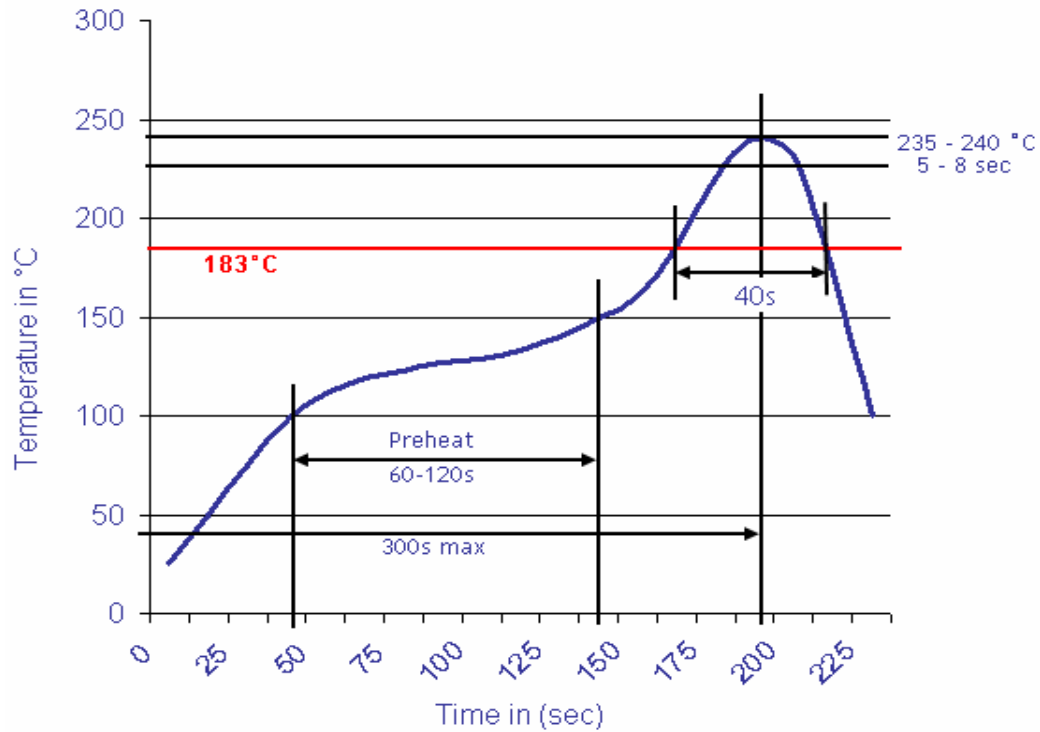


6.5mm SMD Single-Turn

Trimmer Type CA6V

DRW:	Jason	CHKD	Wilson	MATL:	Wilson	TOLERANCE	Mason	DATE	11.8.2009	Part No.:	X17007
APPD:	Schumi			FINISH	Jamy			Sheet No.	2 from 4	Customer:	

Soldering Profile



Range Code Table

Ordering Code	Range
100	10Ω
200	20Ω
500	50Ω
101	100Ω
201	200Ω
501	500Ω
102	1,0KΩ
202	2,0KΩ
502	5,0KΩ
103	10KΩ
203	20KΩ
253	25KΩ
503	50KΩ
104	100KΩ
204	200KΩ
254	250KΩ
504	500KΩ
105	1,0MΩ
205	2,0MΩ



6.5mm SMD Single-Turn

Trimmer Type CA6V

DRW:	Jason	CHKD	Wilson	MATL:	Wilson	TOLERANCE	Mason	DATE	11.8.2009	Part No.:	X17007
APPD:	Schumi			FINISH	Jamy		Sheet No.	3 from 4		Customer:	

Ordering - Information

Serie	Ordering Code	Tolerance	Rotor Style	Taper	Lifetime	ROHS	Packing
-------	---------------	-----------	-------------	-------	----------	------	---------

X17007	101	M	G	A	1	R	BU101
---------------	------------	----------	----------	----------	----------	----------	--------------

101= 100Ω	M= Tol. 20%	G= Hexagonal Style 1	A= Linear	1= 10000 cycles	R= ROHS conform	BU101= Bulk-Ware 100PCS
	N= Tol. 30%	M= Hexagonal Style 2			N= NON ROHS conform	TR= Tape Reel
		L= Screw Driver				
		K= Cross Style				



**6.5mm SMD Single-Turn
Trimmer Type CA6V**

DRW:	Jason	CHKD	Wilson	MATL:	Wilson	TOLERANCE	Mason	DATE	11.8.2009	Part No.:	X17007
APPD:	Schumi			FINISH	Jamy			Sheet No.	4 from 4	Customer:	