



### Technical Specification

#### Electrical Characteristics

Standard Resistance Range: 100Ω to 5,0MΩ Lin.  
 Standard Resistance Range: 1,0KΩ to 2,2MΩ Log/A-Log.  
 Standard Resistance Tolerance:  
 20% Standard from 100Ω ~ 1,0MΩ  
 30% Standard from 1,0MΩ ~ 5,0MΩ

Withstang Voltage: 250VDC  
 Rated Power: 0,25W (lin) 0,12W (no lin)  
 Taper: A, B, C,  
 Residual resistance: ≤5% Rn (2 Ω min)  
 Equivalent noise resistance: ≤3% Rn (3 Ω min)  
 Operating Temperature: -25°C ~ +70°C

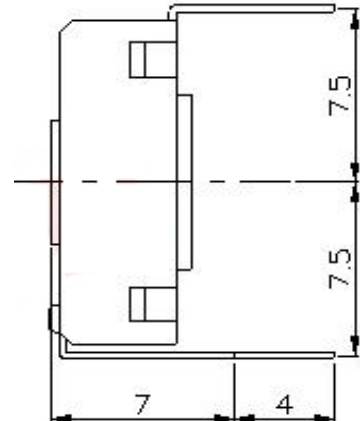
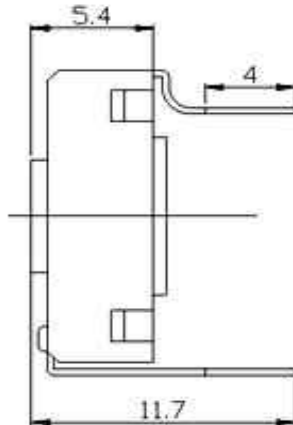
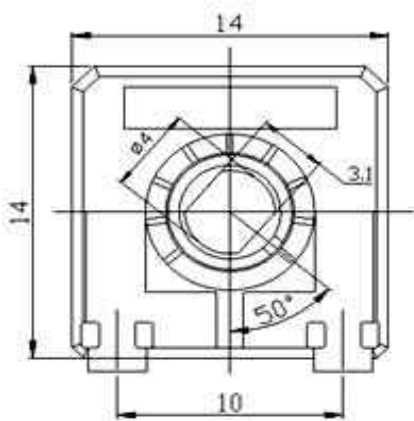
#### Features

Carbon resistive element  
 Dust Proof enclosure  
 Polyester Substrate  
 Long Life Model available  
 Supplied in magazines for automatic insertion

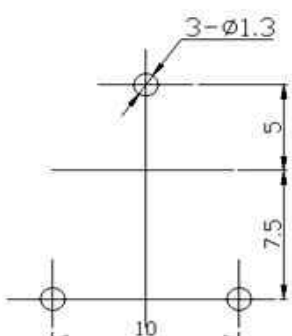
#### Physical Characteristics

Mechanical rotation angle: 265°C +/- 5°  
 Electrical rotation angle: 245°C +/- 20°  
 Torque: 0,5 ~ 2,5Ncm  
 Stop Torque: > 4Ncm  
 Standard Lifetime: 1000cycles  
 Long life time: 10000cycles

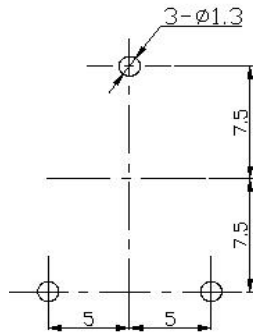
### Technical Dimensions Alternative Brand ACP Type CA 14V



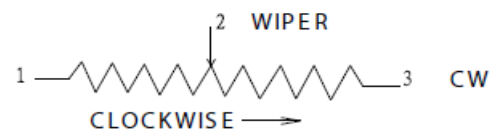
#### PCB Layout A



#### PCB Layout B



#### Physical Structure



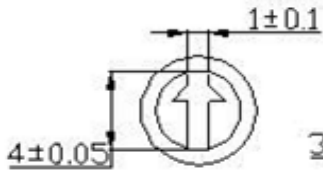
<b>14mm THT Single-Turn Trimmer Type CA14V12,5</b>	
Serie No.:	<b>X17006</b>
Customer:	

DRW:	Jason	CHKD	Jules	MATL:	Wu	DATE	12.04.2019
APPD:	Join			FINISH	Shieh	Sheet	1 from 3

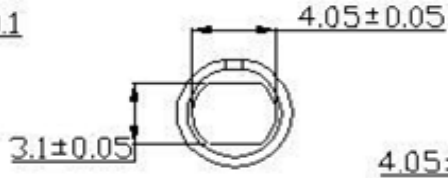
Copyright by S.Tiede



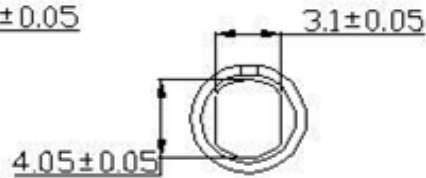
**Rotor Style Table**



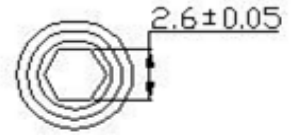
Type P



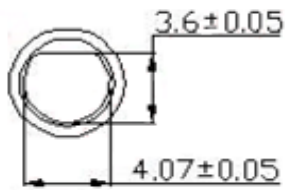
Type H



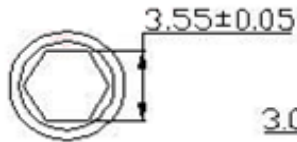
Type Z



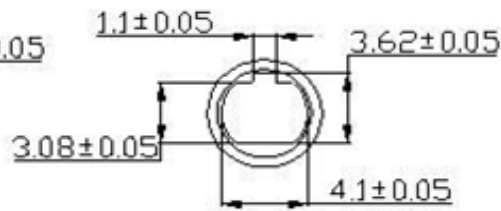
Type M



Type D



Type E



Type T

**Range Code Table**

Ordering Code	Range
100	10Ω
200	20Ω
500	50Ω
101	100Ω
201	200Ω
501	500Ω
102	1,0KΩ
202	2,0KΩ
502	5,0KΩ
103	10KΩ
203	20KΩ
253	25KΩ
503	50KΩ
104	100KΩ
204	200KΩ
254	250KΩ
504	500KΩ
105	1,0MΩ
205	2,0MΩ

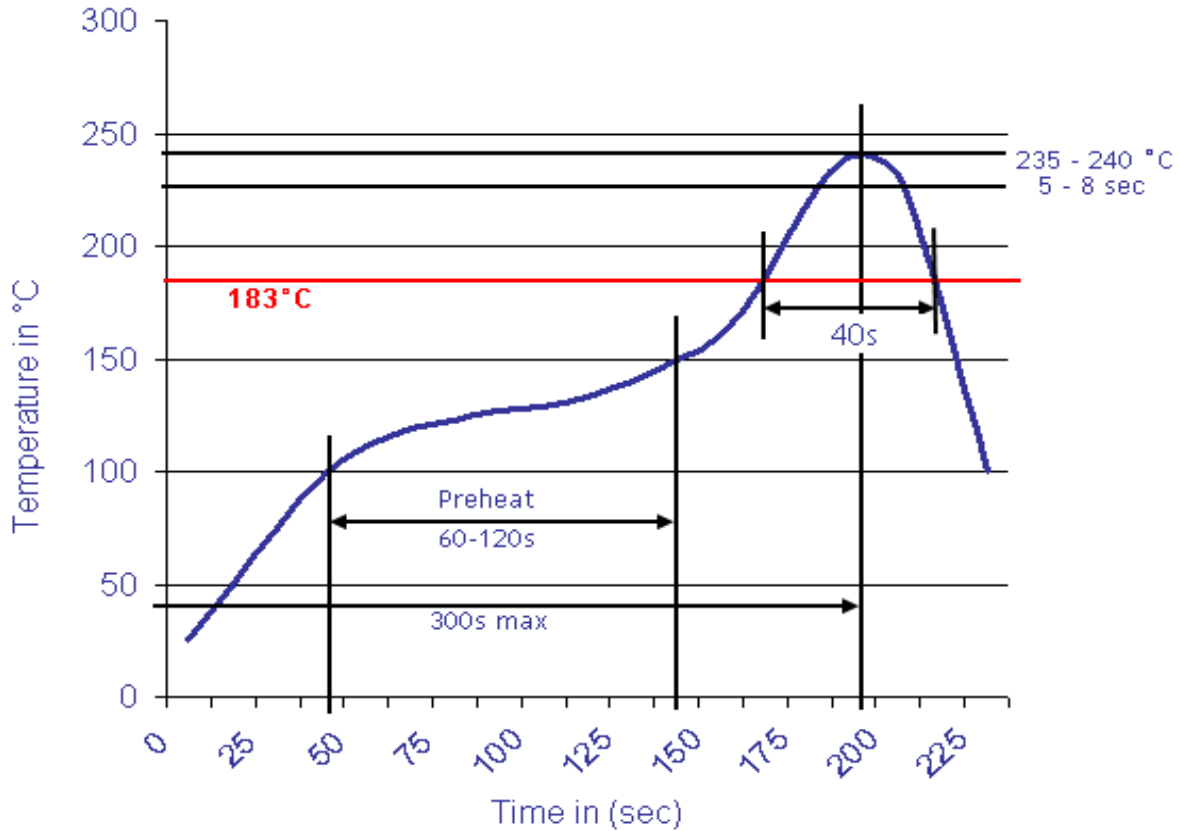
<b>14mm THT Single-Turn Trimmer Type CA14V12,5</b>	
Serie No.:	<b>X17006</b>
Customer:	

DRW:	Jason	CHKD	Jules	MATL:	Wu	DATE	12.04.2019
APPD:	Join			FINISH	Shieh	Sheet	2 from 3



**Soldering Profile**

**Classification Reflow Profile (JEDEC J-STD-020C)**



**Ordering Information**

Serie	Ordering Code	Tolerance	Rotor Style	Taper	PCB Layout	ROHS	Packing
-------	---------------	-----------	-------------	-------	------------	------	---------

<b>X17006</b>	<b>101</b>	<b>M</b>	<b>X</b>	<b>A</b>	<b>1</b>	<b>R</b>	<b>BU101</b>
---------------	------------	----------	----------	----------	----------	----------	--------------

<b>101=</b> 100Ω	<b>M=</b> Tol. 20% <b>N=</b> Tol. 30%	<b>X=</b> Look Table Rotor Style Type	<b>A=</b> Linear <b>B=</b> Logarithmisch <b>C=</b> Anti Logarithmisch	<b>1=</b> Layout Type A <b>2=</b> Layout Type B	<b>R=</b> ROHS conform <b>N=</b> NON ROHS conform	<b>BU101=</b> Bulk-Ware 100PCS <b>TU=</b> Tube Packing
------------------	--	---------------------------------------	---	--	--	---

<b>14mm THT Single-Turn Trimmer Type CA14V12,5</b>	
Serie No.:	<b>X17006</b>
Customer:	

DRW:	Jason	CHKD	Jules	MATL:	Wu	DATE	12.04.2019
APPD:	Join			FINISH	Shieh	Sheet	3 from 3