

### Technical Specification

#### Electrical Characteristics

Standard Resistance Range: 100Ω to 5,0MΩ  
 Standard Resistance Tolerance: 20% Standard  
 20% Standard from 100Ω ~ 1,0MΩ  
 30% Standard from 1,0MΩ ~ 5,0MΩ  
 Withstand Voltage: 250VDC  
 Rated Power: 0,25W (lin) 0,12W (no lin)  
 Taper: A, B, C,  
 Residual resistance: ≤5% Rn (2 Ω min)  
 Equivalent noise resistance: ≤3% Rn (3 Ω min)  
 Operating Temperature: -25°C ~ +70°C

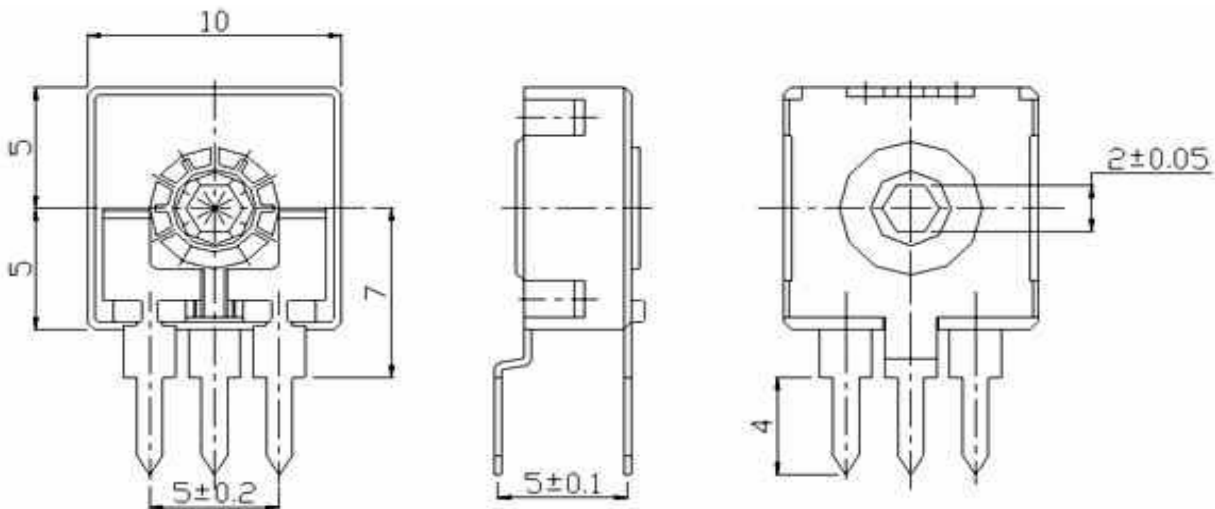
#### Physical Characteristics

Mechanical rotation angle: 265°C +/- 5°  
 Electrical rotation angle: 245°C +/- 20°  
 Torque: 0,5 ~ 2,5Ncm  
 Stop Torque: > 4Ncm  
 Standard Lifetime: 500cycles  
 Long life time: 10000cycles

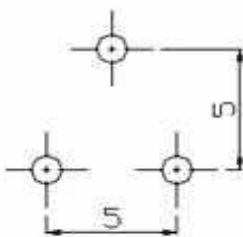
#### Features

Carbon resistive element  
 Dust Proof enclosure  
 Polyester Substrate  
 Long Life Model available  
 Supplied in magazines for automatic insertion

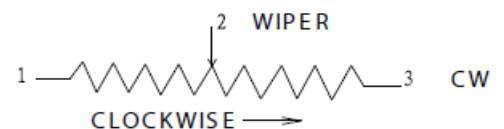
### Technical Dimensions Alternative Brand ACP Type CA 9



#### PCB Layout



#### Physical Structure



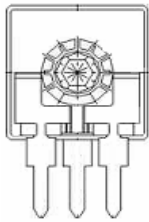
#### 9mm THT Single-Turn Trimmer Type CA9

Serie No.: X17001

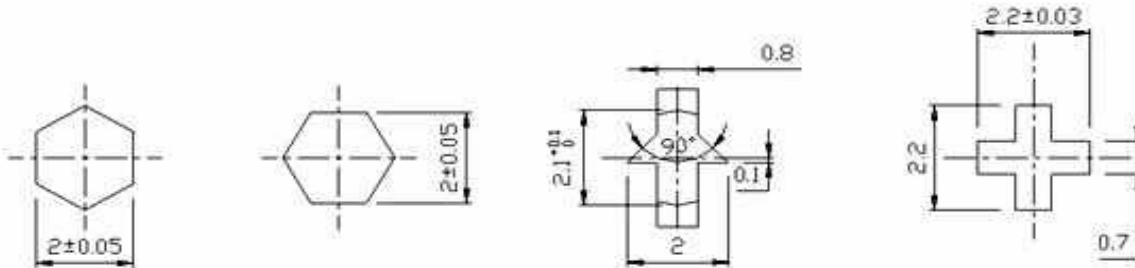
Customer:

DRW:	Jason	CHKD	Jules	MATL:	Wu	DATE	06.09.2009
APPD:	Join			FINISH	Shieh	Sheet	1 from 3

Copyright by EDCON-COMPONENTS H.Schmitt



**Rotor Style Table**



**Range Code Table**

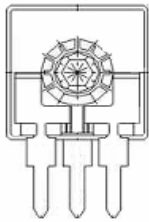
Ordering Code	Range
100	10Ω
200	20Ω
500	50Ω
101	100Ω
201	200Ω
501	500Ω
102	1,0KΩ
202	2,0KΩ
502	5,0KΩ
103	10KΩ
203	20KΩ
253	25KΩ
503	50KΩ
104	100KΩ
204	200KΩ
254	250KΩ
504	500KΩ
105	1,0MΩ
205	2,0MΩ

**9mm THT Single-Turn  
 Trimmer Type CA9**

Serie No.: **X17001**

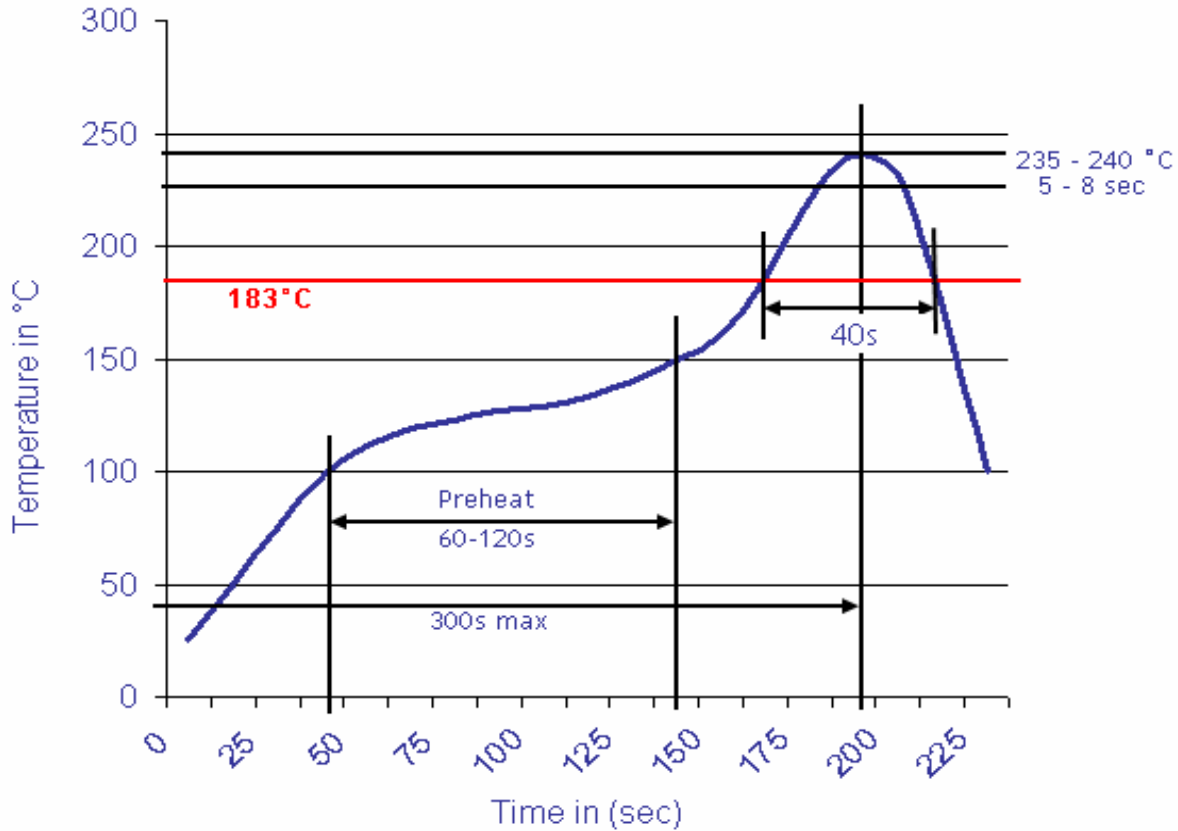
Customer:

DRW:	Jason	CHKD	Jules	MATL:	Wu	DATE	06.09.2009
APPD:	Join			FINISH	Shieh	Sheet	2 from 3



### Soldering Profile

### Classification Reflow Profile (JEDEC J-STD-020C)



### Ordering Information

Serie	Ordering Code	Tolerance	Rotor Style	Taper	Lifetime	ROHS	Packing
-------	---------------	-----------	-------------	-------	----------	------	---------

<b>X17001</b>	<b>101</b>	<b>M</b>	<b>G</b>	<b>A</b>	<b>1</b>	<b>R</b>	<b>BU101</b>
---------------	------------	----------	----------	----------	----------	----------	--------------

101= 100Ω	M= Tol. 20%	G= Hexagonal Style 1	A= Linear	1= 500 cycles Standard	R= ROHS conform	BU101= Bulk-Ware 100PCS
	N= Tol. 30%	M= Hexagonal Style 2	B= Logarithmisch	2= 10000 cycles	N=NON ROHS conform	
		L= Screw Driver	C= Anti Logarithmisch			TU= Tube Packing
		K= Cross Style				

#### 9mm THT Single-Turn Trimmer Type CA9

Serie No.: **X17001**

Customer:

DRW:	Jason	CHKD	Jules	MATL:	Wu	DATE	06.09.2009
APPD:	Join			FINISH	Shieh	Sheet	3 from 3

Copyright by EDCON-COMPONENTS H.Schmitt