

# Data Sheet

## Pluggable Terminal Block (Plug)

**Pitch: 10,16 mm**

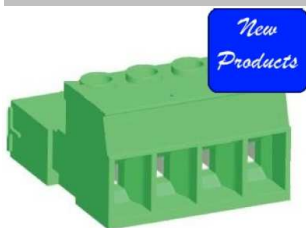
**Serie: A14U015**

### Customer Information for special Item

**EDCON Customer : 0**

**Customer Version No. : 0**

# EDCON-COMPONENTS



## Technical Description

## Drawing (Dimension in mm)

### Approvals

UR/US      IEC

### Electrical

Rated Voltage	300V	1000V
Rated Current	55A	76A
Wire Range	0,5 ~ 16mm <sup>2</sup>	
Solid Wire	6 ~ 20	
Standed Wire	6 ~ 20	
Withstanding Voltage	1,6KV / 8KV	
Insulation Resistance	5000MΩ / 1000V	

### Mechanical

Operating Temperature	-40°C ~ +115°C	
Wire Strip Length	13-14mm	
Screw Torque	10,4 LB-In	
Screw Size	M4,5	

### Dimensions

Pitch (mm)	10,16
Poles	2 ~ 16 Pos.

### Materials

Terminal Housing	Thermoplastic, UL94V-0
Clamp	Brass Ni-plated
Female Contact	Copper tin-plated
Wire Guard	Stainless Steel
Screw	Steel Ni-plated / Zinc plated

No. of Pos.	A	B	C		Tol. A
02	33,52	22,16	10,16		± 0,25
03	43,68	32,32	20,32		± 0,25
04	53,84	42,48	30,48		± 0,25
05	64,00	52,64	40,64		± 0,30
06	74,16	62,80	50,80		± 0,30
07	84,32	72,96	60,96		± 0,30
08	94,48	83,12	71,12		± 0,35
09	104,64	93,28	81,28		± 0,35
10	114,80	103,44	91,44		± 0,35
11	124,96	113,60	101,60		± 0,45
12	135,12	123,76	111,76		± 0,45

### Pluggable Terminal Block (Plug)

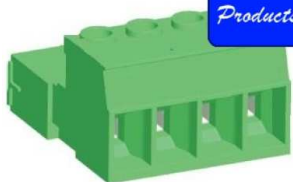
Part No.: **A14U015**

DRW:	Jason	CHKD	Wilson	MATL:	Wilson	TOLERANCE	Mason	DATE	03.02.2011
APPD:	Schumi			FINISH	Jamy		Sheet No.		1 from 3

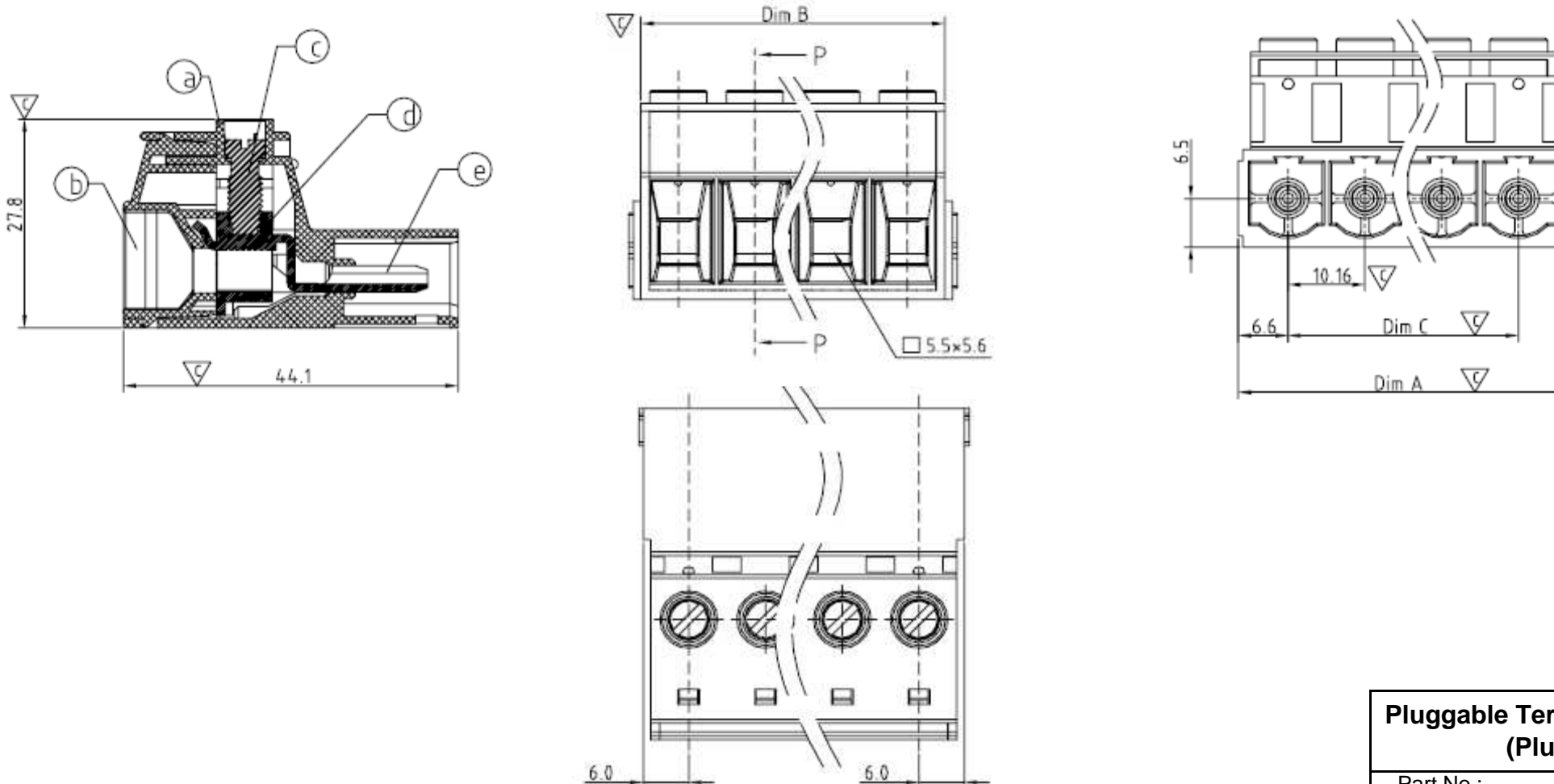
Customer:

# EDCON-COMPONENTS

New Products



Drawing (Dimension in mm)



**Pluggable Terminal Block (Plug)**

Part No.: **A14U015**

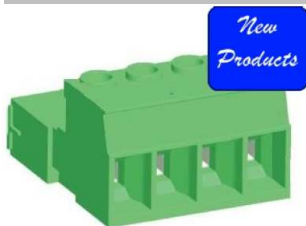
Customer:

DRW:	Jason	CHKD	Wilson	MATL:	Wilson	TOLERANCE	Mason	DATE	03.02.2011
APPD:	Schumi			FINISH	Jamy		Sheet No.	2 from 3	

[www.edcon-components.com](http://www.edcon-components.com)

email: [info@edcon-components.com](mailto:info@edcon-components.com)

# EDCON-COMPONENTS



## Ordering Informations

Serie	No. of Pos.	Body Color	Screw Type	Approval Code	ROHS	Packing	EDCON Cust. No.	Customer Version		
<b>A14U015</b>	<b>02</b>	<b>PG</b>	<b>A</b>	<b>N</b>	<b>R</b>	<b>B</b>				

Pitch  
10,16

<b>02</b> = Number of Pos.  Standard 2 ~ 12Pos.	<b>PG</b> = Phoenix Green (Standard)	<b>A</b> = Slotted Screw Type (Standard)	<b>N</b> = NON Approval	<b>R</b> = ROHS Conform	<b>B</b> = Bulk-Ware  <b>I</b> = Individual Package	<b>xxxxxx</b> = Customer Number	<b>xxx</b> = Customer Version ??(Printing)
	<b>WH</b> = White		<b>A</b> = UL /UR Approval Please consult EDCON for available	<b>N</b> = NON ROHS Conform			
	<b>GN</b> = Green	<b>B</b> = Cross Slotted Screw Type	<b>B</b> = VDE Approval Please consult EDCON for available	<b>C</b> = TÜV Approval Please consult EDCON for available			
	<b>GY</b> = Gray						
	<b>LG</b> = Light Gray						
	<b>OR</b> = Orange						
	<b>BL</b> = Blue						
<b>BK</b> = Black							

<b>Pluggable Terminal Block (Plug)</b>	
Part No.:	<b>A14U015</b>
Customer:	

DRW:	Jason	CHKD	Wilson	MATL:	Wilson	TOLERANCE	Mason	DATE	03.02.2011
APPD:	Schumi			FINISH	Jamy		Sheet No.	3 from 3	