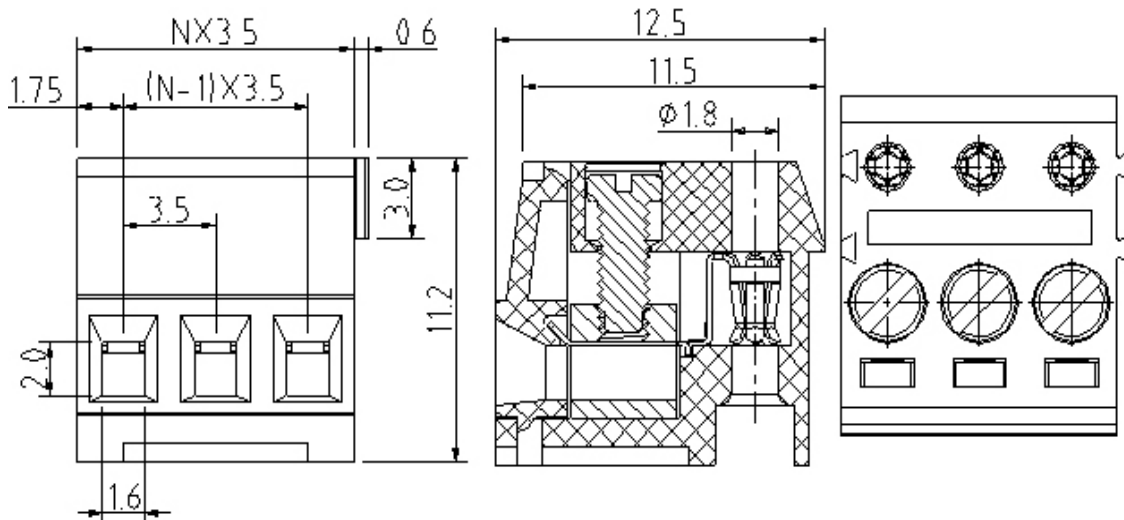


# EDCON-COMPONENTS



## Drawing



P.C.B. Layout

## Specification

### APPROVAL



#### Electrical

Standard  
Rated voltage  
Rated current  
Withstanding voltage  
Wire range

cULus  
300V  
10A  
1.6KV  
28-16 AWG

#### Mechanical

Ambient temperature  
Screw, Torque  
Strip length

-40°C ~ +115°C  
M2, 0.2Nm (1.7Lb-In.)  
5 ~ 6mm

#### Dimensions

Pitch  
Poles

3.50mm  
2P + 3P

#### Material

Housing  
Metal housing  
Wire guard  
Terminal screw

Thermoplastic (UL94V-0)  
Brass (CuZn)  
PhBz (CuSn)  
Steel Zinc



### Certification



Pluggable Terminal Block /  
Pitch 3.50mm

Part No.: A14G057

Customer:

DRW:	Justin	CHKD	Frank	MATL:	Jordan	TOLERANCE	Lord	Date	10.02.2009
APPD:	Pete			FINISH	Mike			Sheet No.	1 from 3

[www.edcon-components.com](http://www.edcon-components.com)

email: [info@edcon-components.com](mailto:info@edcon-components.com)

# EDCON-COMPONENTS



## Ordering Informations

Serie	-	No. of Pole	Body-Color	-	Customer Request
<b>A14G057</b>	-	<b>XX</b>	<b>XX</b>	-	<b>X</b>
		XX = total	<b>WH</b> - white		
		02	<b>GN</b> - green		
		03	<b>GR</b> - gray		
			<b>TP</b> - transparent		
			<b>OR</b> - orange		
			<b>BK</b> - black		
			<b>BL</b> - blue		
			<b>RD</b> - red		
			<b>YW</b> - yellow		
			<b>PG</b> - Phoenix Green		



Certification



Pluggable Terminal Block /  
Pitch 3.50mm

Part No.: A14G057

Customer:

DRW:	Justin	CHKD	Frank	MATL:	Jordan	TOLERANCE	Lord	Date	10.02.2009
APPD:	Pete			FINISH	Mike			Sheet No.	2 from 3

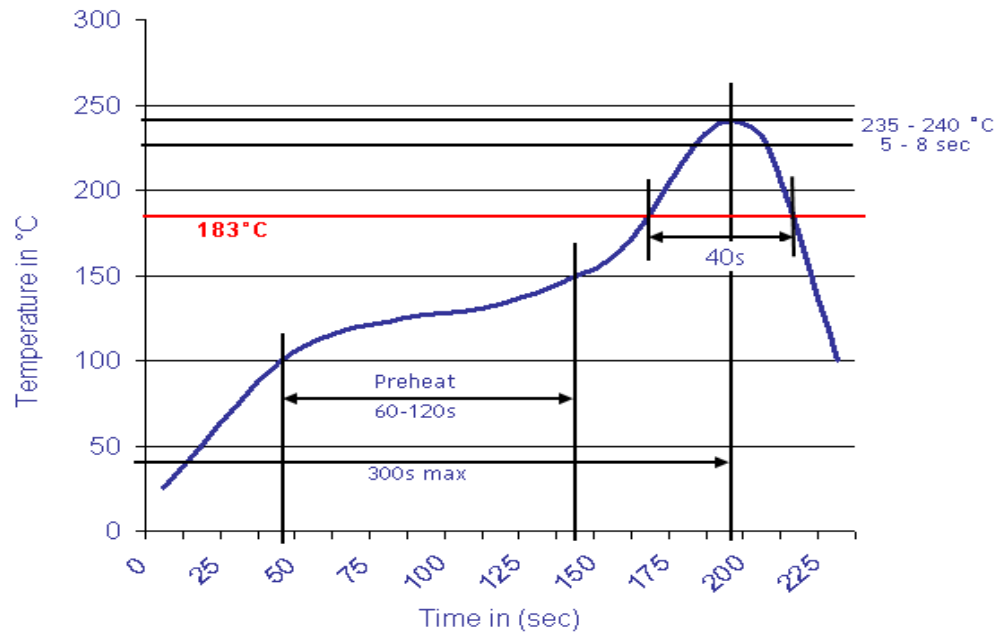
[www.edcon-components.com](http://www.edcon-components.com)

email: [info@edcon-components.com](mailto:info@edcon-components.com)



## Soldering - Profil

Classification Reflow Profile (JEDEC J-STD-020C)



Pluggable Terminal Block / Pitch 3.50mm	
Part No.:	A14G057
Customer:	

DRW:	Justin	CHKD	Frank	MATL:	Jordan	TOLERANCE	Lord	Date	10.02.2009
APPD:	Pete			FINISH	Mike			Sheet No.	3 from 3