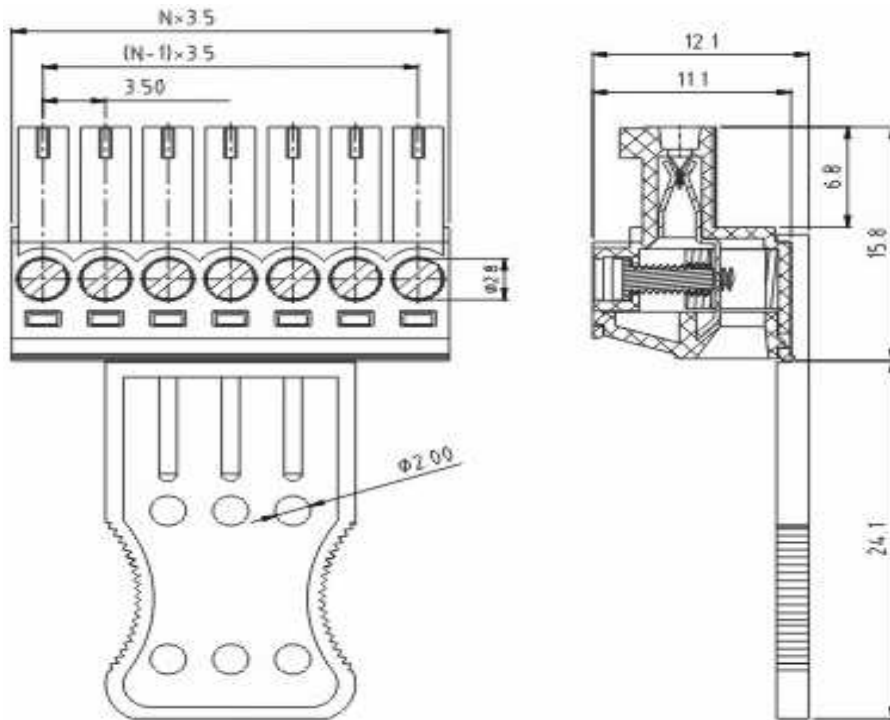


# EDCON-COMPONENTS



## Drawing



## Specification

### APPROVAL



#### Electrical

Standard	cULus
Rated voltage	300V
Rated current	10A
Wire range	26-16 AWG
Withstanding voltage	1.6KV

#### Mechanical

Ambient temperature	-40°C ~ +115°C
Strip length	6 ~ 7mm
Screw, Torque	M2, 0.3Nm (3.0Lb-In.)

#### Dimensions

Pitch	3.50mm
Poles	2P - 24P

#### Material

Housing	Thermoplastic (UL94V-0)
Pin header	Brass, Tin plated
Wire guard	PhBz (CuSn)
Terminal screw	Steel Zinc
Metal housing	Brass (CuZn)



Certification



Pluggable Terminal Block /  
Pitch 3.50mm

Part No.: A14G030

Customer:

DRW:	Justin	CHKD	Frank	MATL:	Jordan	TOLERANCE	Lord	Date	10.02.2009
APPD:	Pete			FINISH	Mike			Sheet No.	1 from 3

[www.edcon-components.com](http://www.edcon-components.com)

email: [info@edcon-components.com](mailto:info@edcon-components.com)

# EDCON-COMPONENTS



## Ordering Informations

Serie	-	No. of Pole	Body-Color	-	Customer Request
<b>A14G030</b>	-	<b>XX</b>	<b>XX</b>	-	<b>X</b>
		XX = total	<b>WH</b> - white		
		02P	<b>GN</b> - green		
		...	<b>GR</b> - gray		
		24P	<b>TP</b> - transparent		
			<b>OR</b> - orange		
			<b>BK</b> - black		
			<b>BL</b> - blue		
			<b>RD</b> - red		
			<b>YW</b> - yellow		
			<b>PG</b> - Phoenix Green		



Certification



Pluggable Terminal Block / Pitch 3.50mm	
Part No.:	A14G030
Customer:	

DRW:	Justin	CHKD	Frank	MATL:	Jordan	TOLERANCE	Lord	Date	10.02.2009
APPD:	Pete			FINISH	Mike		Sheet No.		2 from 3

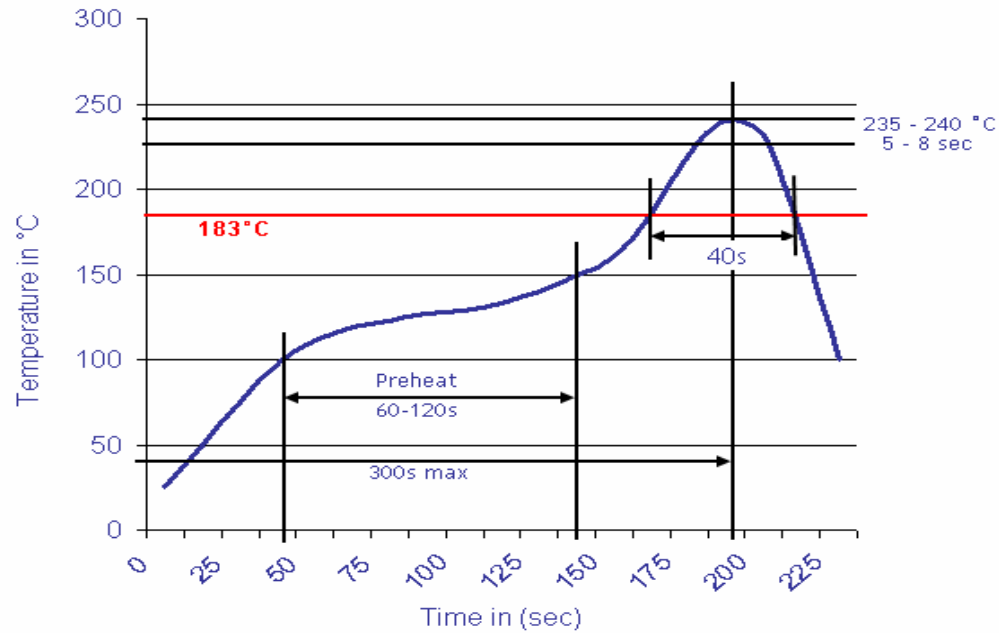
[www.edcon-components.com](http://www.edcon-components.com)

email: [info@edcon-components.com](mailto:info@edcon-components.com)



## Soldering - Profil

### Classification Reflow Profile (JEDEC J-STD-020C)



Pluggable Terminal Block / Pitch 3.50mm	
Part No.:	A14G030
Customer:	

DRW:	Justin	CHKD	Frank	MATL:	Jordan	TOLERANCE	Lord	Date	10.02.2009
APPD:	Pete			FINISH	Mike			Sheet No.	3 from 3