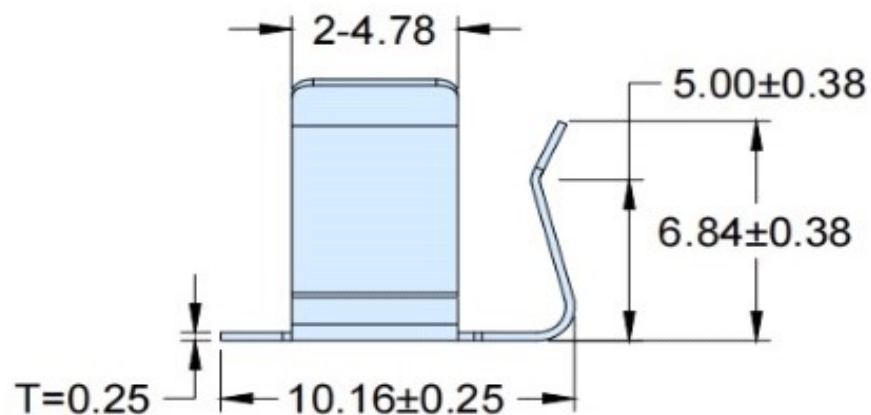
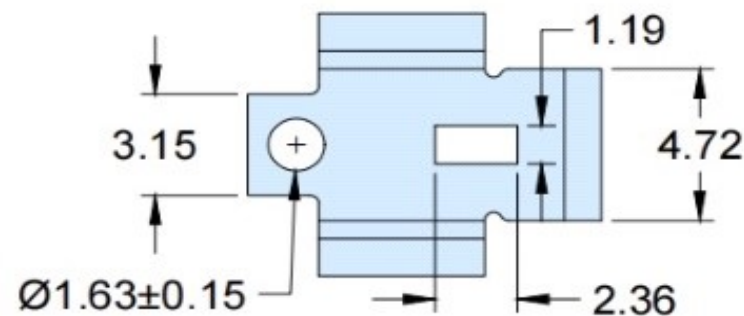
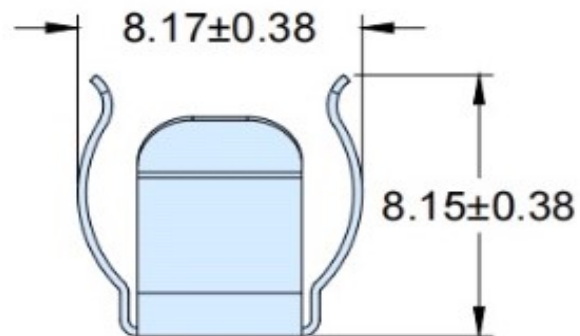


# EDCON-COMPONENTS



Drawing inch / mm



**Note**  
 Material: Stainless Steel  
 Thickness: 0.01 / 0,25 inch/mm  
 Surface: TIN NICKEL PLATE

Tolerances  
 Inch .+/-0,01  
 mm .+/-0,25  
 Angle .+/-2°

Unless otherwise specified

DRW:	Jason	CHKD	Wilson	MATL:	Wilson	TOLERANCE	Mason	DATE	20.11.2024
APPD:	Schumi			FINISH	Jamy		Sheet No.		1 from 3

<b>SMD-PCB AAAA Battery-Clip</b>	
Part No.:	<b>B38049</b>
Customer:	

[www.edcon-components.com](http://www.edcon-components.com)

email: [info@edcon-components.com](mailto:info@edcon-components.com)

# EDCON-COMPONENTS



## Ordering Informations

PCB Layout inch/mm AAAA Battery-Clip

Serie	Special function	Special Code	ROHS	Packing	
<b>B38049</b>	<b>N</b>	<b>N</b>	<b>R</b>	<b>BU</b>	

<b>N</b> = No special function	<b>N</b> = No special function	<b>R</b> = ROHS Conform	<b>BU</b> = Bulk-Ware
			<b>TR</b> = Tape/Reel



BATTERY SIZE	"L" DIMENSION
"AAAA"	22.48
"A27"	8.1

**SMD-PCB AAAA Battery-Clip**

Part No.: **B38049**

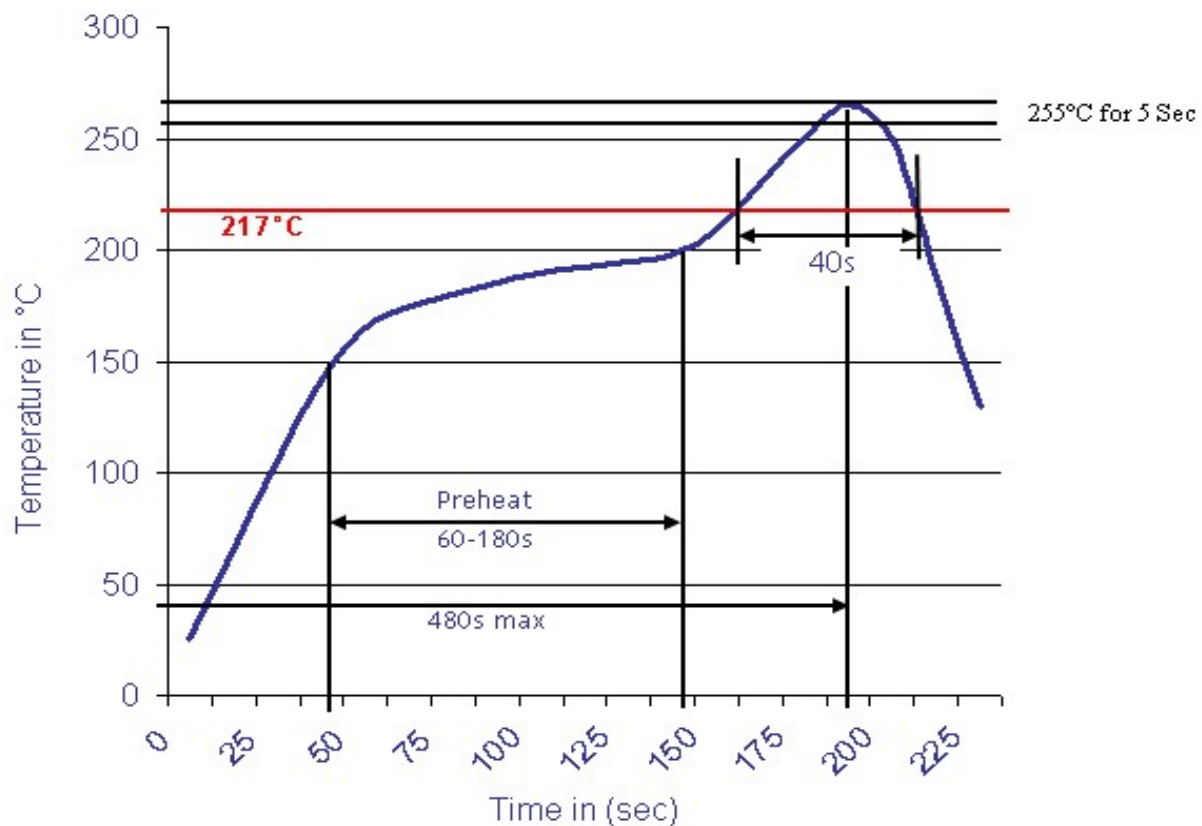
DRW:	Jason	CHKD	Wilson	MATL:	Wilson	TOLERANCE	Mason	DATE	20.11.2024
APPD:	Schumi			FINISH	Jamy		Sheet No.		2 from 3

Customer:



Soldering Profile Curve

Classification Reflow Profile (JEDEC J-STD-020C)



<b>SMD-PCB AAAA Battery-Clip</b>	
Part No.:	<b>B38049</b>
Customer:	

DRW:	Jason	CHKD:	Wilson	MATL:	Wilson	TOLERANCE:	Mason	DATE:	20.11.2024
APPD:	Schumi	FINISH:	Jamy			Sheet No.:			3 from 3