

Data Sheet

Screwless Pluggable Terminal Block (Plug)

Pitch: 7,62 mm

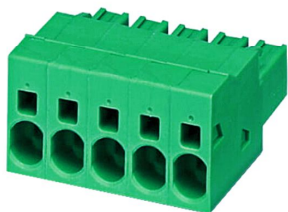
Serie: A14R056

Customer Information for special Item

EDCON Customer : xxxxxx

Customer Version No. : xx

EDCON-COMPONENTS



Technical Discription

Electrical:

Rated voltage:
Rated current:
Withstanding Voltage: AC/1min:
Operating Temperature:

UL/UR	CE	VDE
600V		630
35A		41A
2,2KV		8KV

-60°C ~ +105°C

Mechanical:

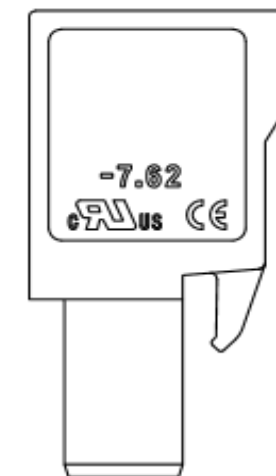
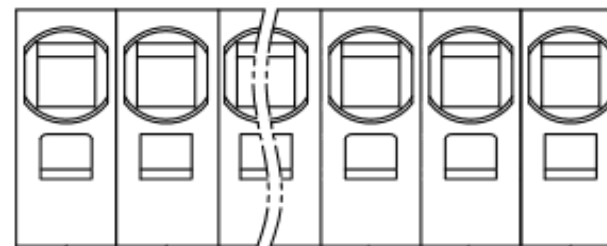
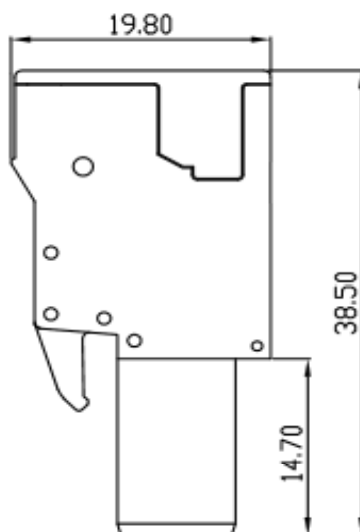
Strip length: mm
Wire range: Solid wire: AWG
Wire range: Stranded wire:AWG

7 ~ 8	7 ~ 8	
24 ~ 8	24 ~ 8	6,0mm ²
24 ~ 8	24 ~ 8	6,0mm ²

Material:

Housing Terminal Body: PA66 UL94V-0
Material Screw: Stainless steel
Material Terminal: Copper Alloy / Nickel plated

Drawing (Dimension in mm)



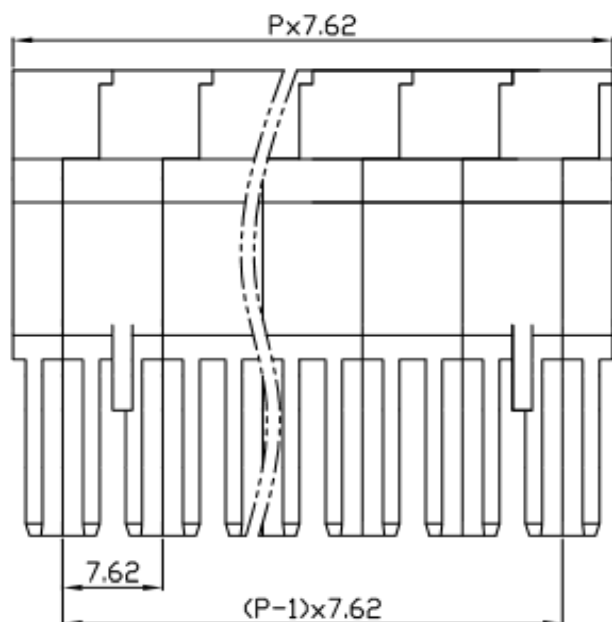
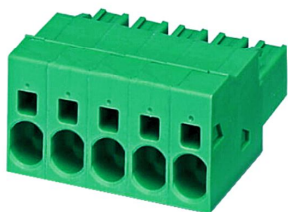
Item No.		
1		
2		
3		
4		
5		
6		
7		
8		
9		

Tolerances unless otherwise specified (mm)				
X	X.X	X.XX	X.XXX	Angle
±	±	±	±	±3°
DRW:	Jason	CHKD	Wilson	MATL:
APPD:	Schumi			FINISH

Screwless Pluggable Terminal Block (Plug)	
Part No.:	A14R056
Customer:	

DRW:	Jason	CHKD	Wilson	MATL:	Wilson	TOLERANCE	Mason	DATE	23.08.2021
APPD:	Schumi			FINISH	Jamy		Sheet No.		1 from 3

EDCON-COMPONENTS



**Screwless Pluggable
Terminal Block (Plug)**

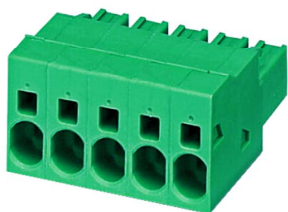
Part No.: **A14R056**

DRW:	Jason	CHKD	Wilson	MATL:	Wilson	TOLERANCE	Mason	DATE	23.08.2021
APPD:	Schumi			FINISH	Jamy		Sheet No.	2 from 3	Customer:

www.edcon-components.com

email: info@edcon-components.com

EDCON-COMPONENTS



Ordering Informations

Serie	No. of Pos.	Body Color	Screw Function	Approval Code	ROHS	Packing	EDCON Cust. No.	Customer Version		
-------	-------------	------------	----------------	---------------	------	---------	-----------------	------------------	--	--

A14R056	02	PG	C	N	R	B	xxxxxx	xx		
----------------	-----------	-----------	----------	----------	----------	----------	---------------	-----------	--	--

Pitch 7,62	02= Number of Pos. Standard 2 ~ 16Pos.	PG= Phoenix Green (Standard) GY= Gray LG= Light Gray OR= Orange	C= Screwless Type	N= NON Approval 1= UL-Approval for Material A= UL /UR Approval Please consult EDCON for available B= VDE Approval Please consult EDCON for available C= TÜV Approval Please consult EDCON for available	R= ROHS Conform N= NON ROHS Conform	B= Bulk-Ware I= Individual Package	xxxxxx= Customer Number	xx= Customer Version ??(Printing)		
---------------	--	--	--------------------------	--	--	---	--------------------------------	--	--	--

Screwless Pluggable Terminal Block (Plug)
Part No.: A14R056
Customer:

DRW:	Jason	CHKD	Wilson	MATL:	Wilson	TOLERANCE	Mason	DATE	23.08.2021
APPD:	Schumi			FINISH	Jamy		Sheet No.		3 from 3

