

Data Sheet

Screwless Terminal Block

Pitch: 20,00 mm

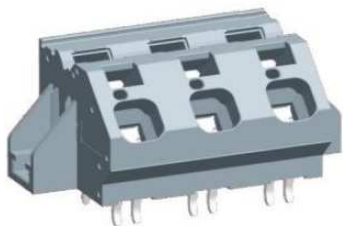
Serie: A11W002

Customer Information for special Item

EDCON Customer : 0

Customer Version No. : 0

EDCON-COMPONENTS



Technical Discription

Drawing (Dimension in mm)

Electrical

Standard	cULus	IEC
Rated voltage	300V	250V
Rated current	10A	76A
Withstanding voltage	1.6KV	4KV
Solid wire	26-12 AWG	0.2-16mm ²
Stranded wire	26-12 AWG	0.2-16mm ²

Mechanical

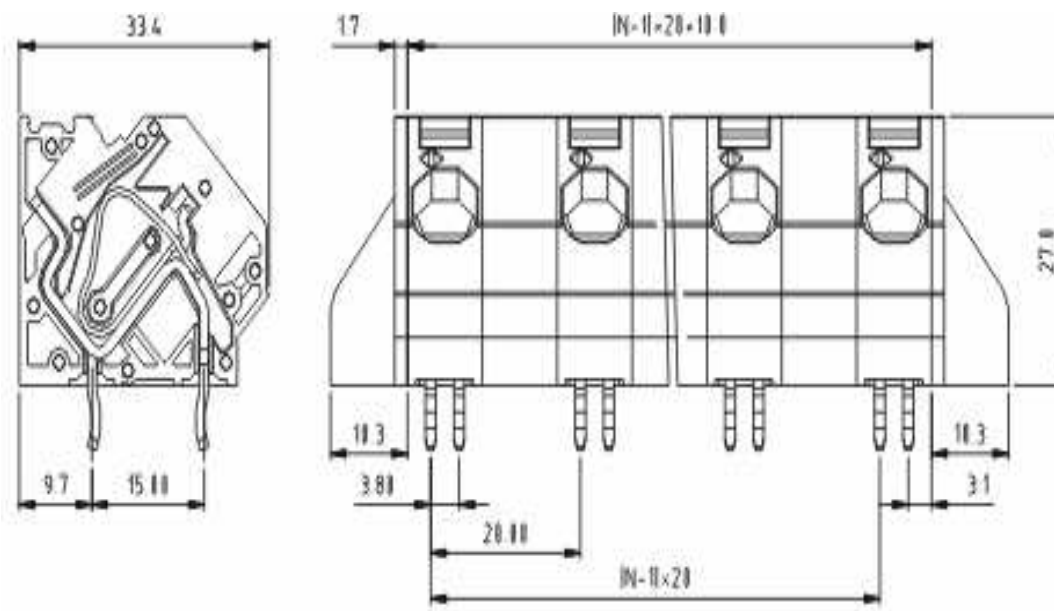
Wire strip length	6 ~ 7mm
Ambient temperature	-40°C ~ +115°C
Soldering temperature	250°C ±10°C/5 sec

Dimensions

Pitch	20.00mm
Poles	2P - 12P

Material

Housing	Thermoplastic (UL94V-0)
Pin header	PhBz
Wire guard	Stainless steel



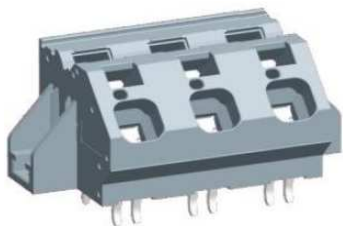
Screwless Terminal Block

Part No.: **A11W002**

Customer:

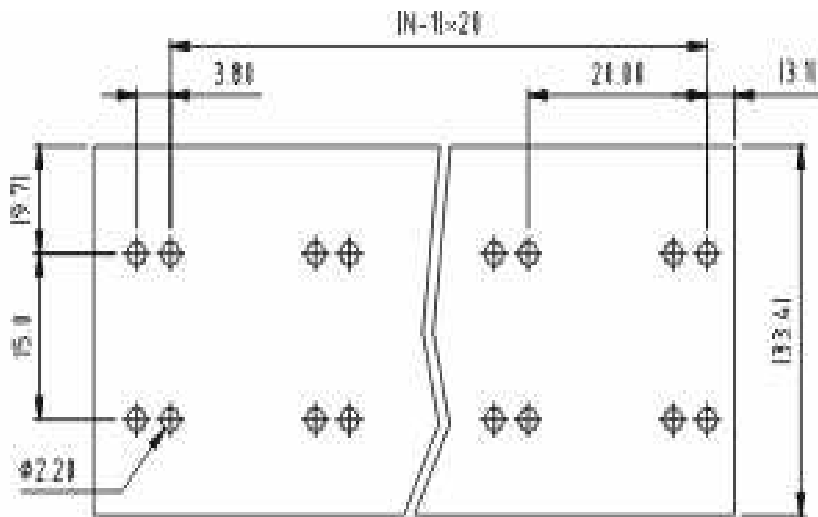
DRW:	Jason	CHKD	Wilson	MATL:	Wilson	TOLERANCE	Mason	DATE	10.02.2014
APPD:	Schumi			FINISH	Jamy		Sheet No.	1 from 4	

EDCON-COMPONENTS



PCB Layout (Dimension in mm)

Dimensions (mm)



No. of Pos.	A	Tol. P	B	Tol. P	
02	50,00	± 0,35	20,00	± 0,35	
03	70,00	± 0,35	40,00	± 0,35	
04	90,00	± 0,35	60,00	± 0,35	
05	110,00	± 0,35	80,00	± 0,35	
06	130,00	± 0,35	100,00	± 0,35	
07	150,00	± 0,35	120,00	± 0,35	
08	170,00	± 0,35	140,00	± 0,35	
09	190,00	± 0,35	160,00	± 0,35	
10	210,00	± 0,35	180,00	± 0,35	
11	230,00	± 0,35	200,00	± 0,35	
12	250,00	± 0,35	220,00	± 0,35	

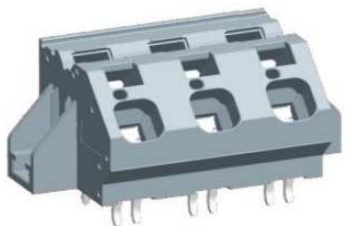
Screwless Terminal Block

Part No.: **A11W002**

DRW:	Jason	CHKD	Wilson	MATL:	Wilson	TOLERANCE	Mason	DATE	10.02.2014
APPD:	Schumi			FINISH	Jamy		Sheet No.	2 from 4	

Customer:

EDCON-COMPONENTS



Ordering Informations

Serie	No. of Pos.	Body Color	Approval	Approval Code	ROHS	Packing	EDCON Cust. No.	Customer Version		
A11W002	02	GY	N	N	R	B				

Pitch
20,00

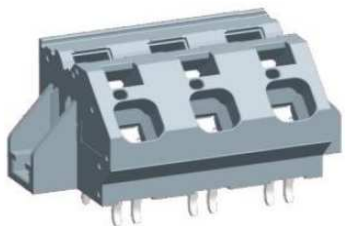
02= Number of Pos. Standard 2~12 Pos.	GY= Gray (Standard) GN= Green OR= Orange BK= Black	N= No Approval 1= Approval for Material 2= Approval for Terminal Block	N= NON Approval A= UL /UR Approval Please consult EDCON for available B= VDE Approval Please consult EDCON for available C= TÜV Approval Please consult EDCON for available	R= ROHS Conform N= NON ROHS Conform	B= Standard Package I= Individual Package	xxxxxx= Customer Number	xxx= Customer Version ??(Printing)
---	---	---	--	--	--	--------------------------------	---

Screwless Terminal Block

Part No.: **A11W002**

DRW:	Jason	CHKD	Wilson	MATL:	Wilson	TOLERANCE	Mason	DATE	10.02.2014
APPD:	Schumi			FINISH	Jamy		Sheet No.		3 from 4

Customer:



Soldering Profile Curve

Classification Reflow Profile (JEDEC J-STD-020C)



Screwless Terminal Block

Part No.: **A11W002**

Customer:

DRW:	Jason	CHKD	Wilson	MATL:	Wilson	TOLERANCE	Mason	DATE	10.02.2014
APPD:	Schumi			FINISH	Jamy		Sheet No.	4 from 4	

