

# Data Sheet

## Screwless Terminal Block

**Pitch: 5,00 mm**

**Serie: A11L061**

### Customer Information for special Item

**EDCON Customer : 0**

**Customer Version No. : 0**

# EDCON-COMPONENTS



## Technical Discription

### Electrical

Rated voltage	300V
Rated current	10A
Contact resistance	20mΩ
Insulation resistance	5000MΩ / 1000V
Withstanding voltage	AC1500V/Min
Wire range	26-14 AWG / 2.5mm <sup>2</sup>

### Mechanical

Wire strip length	5 ~ 6mm
Operating temperature	-40°C ~ +105°C
Soldering temperature	+250°C/Sec

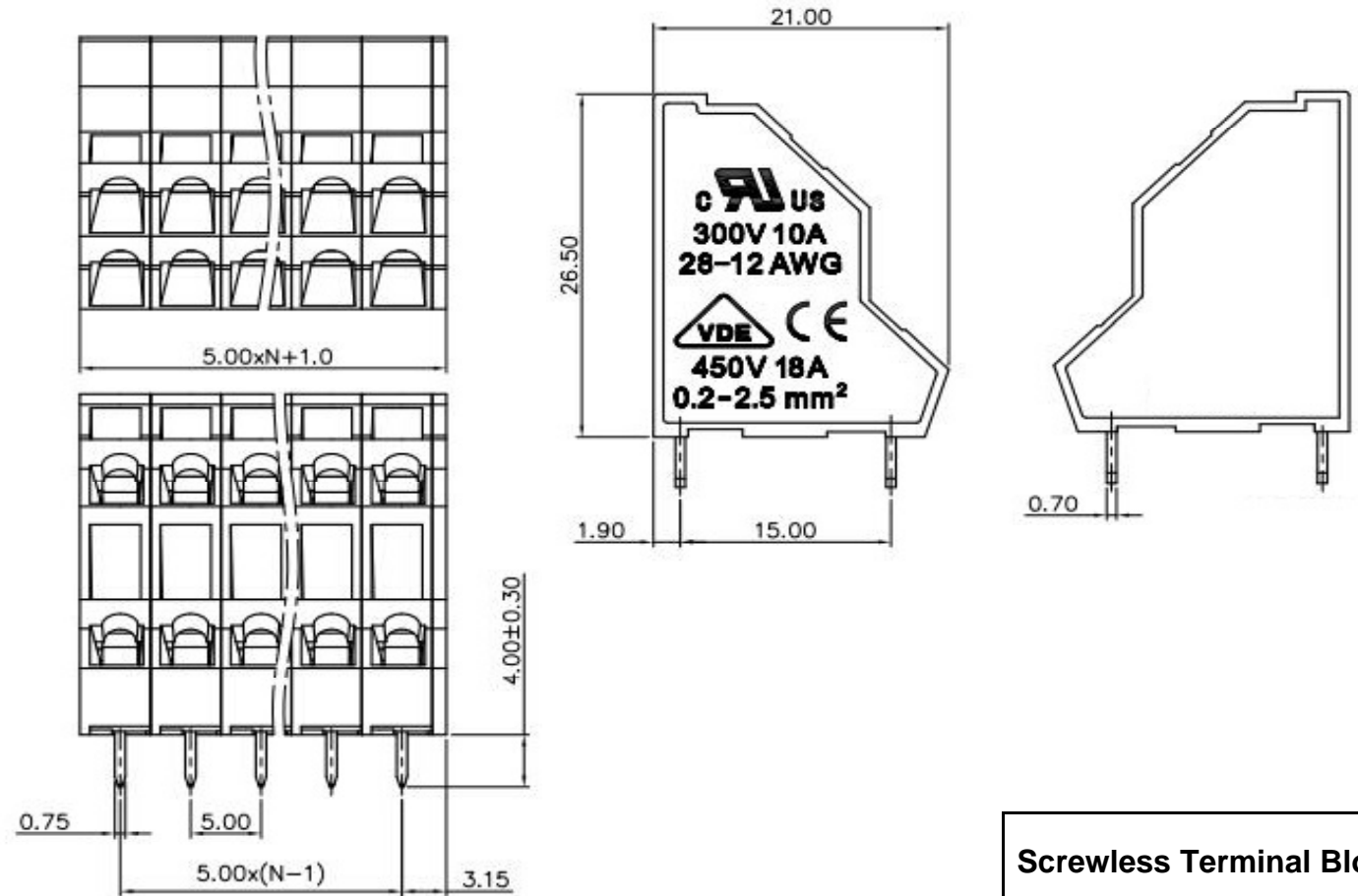
### Dimensions

Pitch	5.00mm
Poles	2x (1P - xxP)

### Material

Housing	PA66 (UL94V-0)
Pin header	Brass, Tin plated
Wire guard	Stainless steel

## Drawing (Dimension in mm)



## Screwless Terminal Block

Part No.: **A11L061**

Customer:

DRW:	Jason	CHKD	Wilson	MATL:	Wilson	TOLERANCE	Mason	DATE	25.12.2020
APPD:	Schumi			FINISH	Jamy			Sheet No.	1 from 4

[www.edcon-components.com](http://www.edcon-components.com)

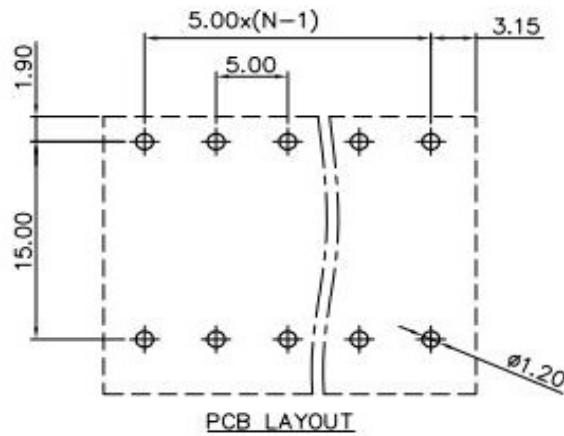
email: [info@edcon-components.com](mailto:info@edcon-components.com)

# EDCON-COMPONENTS



PCB Layout (Dimension in mm)

Dimensions (mm)



<b>Screwless Terminal Block</b>	
Part No.:	<b>A11L061</b>
Customer:	

DRW:	Jason	CHKD	Wilson	MATL:	Wilson	TOLERANCE	Mason	DATE	25.12.2020
APPD:	Schumi			FINISH	Jamy		Sheet No.	2	from 4

# EDCON-COMPONENTS



## Ordering Informations

Serie	No. of Pos.	Body Color	Approval	Approval Code	ROHS	Packing	EDCON Cust. No.	Customer Version		
-------	-------------	------------	----------	---------------	------	---------	-----------------	------------------	--	--

<b>A11L061</b>	<b>04</b>	<b>GY</b>	<b>N</b>	<b>N</b>	<b>R</b>	<b>B</b>				
----------------	-----------	-----------	----------	----------	----------	----------	--	--	--	--

Pitch 5,00
---------------

<b>04=</b> Number 2x02 Pos.	<b>GY=</b> Gray (Standard)	<b>N=</b> No Approval	<b>N=</b> NON Approval	<b>R=</b> ROHS Conform	<b>B=</b> Standard Package	<b>xxxxxx=</b> Customer Number	<b>xxx=</b> Customer Version ??(Printing)
Standard 2x2~2x24 Pos.		<b>1=</b> Approval for Material	<b>A=</b> UL /UR Approval Please consult EDCON for available	<b>N=</b> NON ROHS Conform	<b>I=</b> Individual Package		
	<b>GN=</b> Green	<b>2=</b> Approval for Terminal Block					
			<b>B=</b> VDE Approval Please consult EDCON for available				
	<b>OR=</b> Orange						
			<b>C=</b> TÜV Approval Please consult EDCON for available				
	<b>BK=</b> Black						

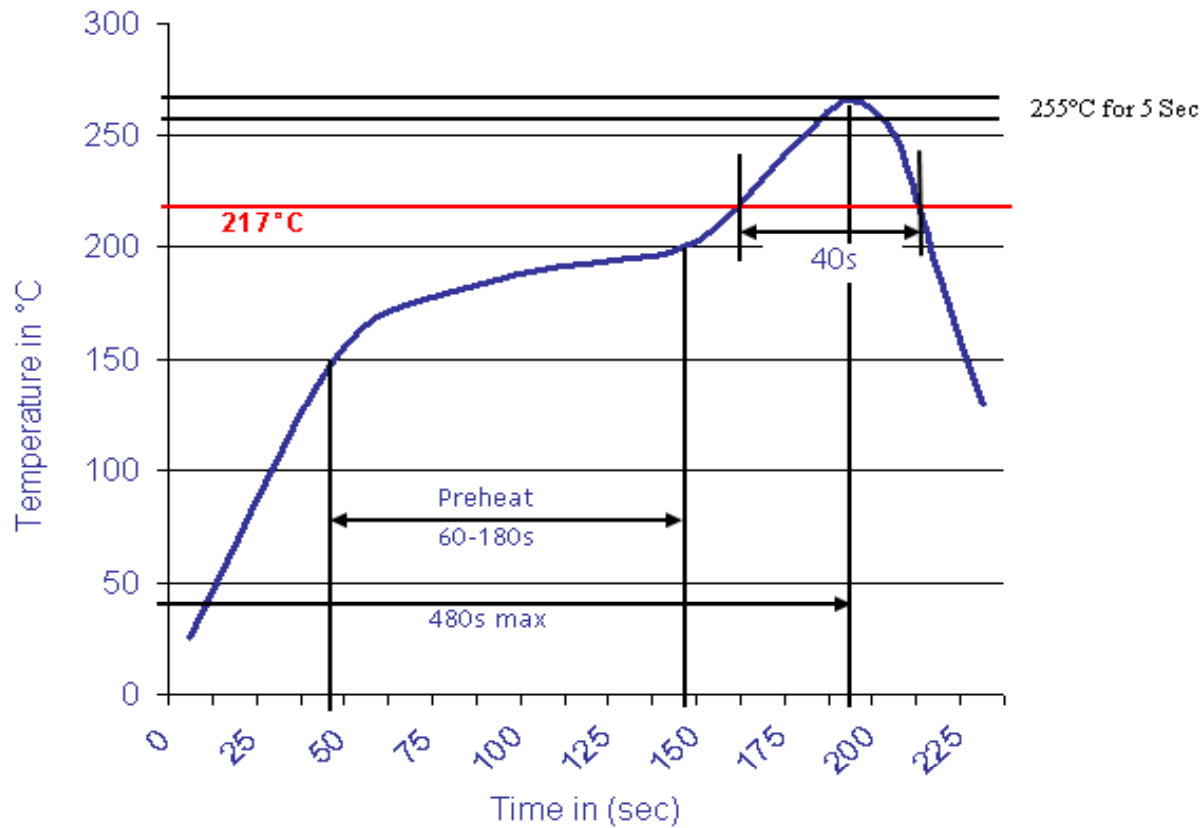
<b>Screwless Terminal Block</b>	
Part No.:	<b>A11L061</b>
Customer:	

DRW:	Jason	CHKD	Wilson	MATL:	Wilson	TOLERANCE	Mason	DATE	25.12.2020
APPD:	Schumi			FINISH	Jamy		Sheet No.		3 from 4



Soldering Profile Curve

Classification Reflow Profile (JEDEC J-STD-020C)



**Screwless Terminal Block**

Part No.: **A11L061**

Customer:

DRW:	Jason	CHKD	Wilson	MATL:	Wilson	TOLERANCE	Mason	DATE	25.12.2020
APPD:	Schumi			FINISH	Jamy		Sheet No.	4 from 4	