

Data Sheet

Screwless Terminal Block

Pitch: 5,00 mm

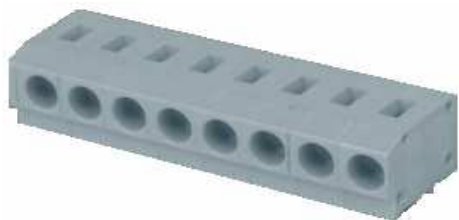
Serie: A11L008

Customer Information for special Item

EDCON Customer : 0

Customer Version No. : 0

EDCON-COMPONENTS



Technical Discription

Drawing (Dimension in mm)

Electrical

Standard
 Rated voltage
 Rated current
 Solid / Stranded wire
 Withstanding voltage

UL	VDE
300V	450V
10A	6A
20-14 AWG	0.5mm ²
1.6KV	2.5KV

Mechanical

Wire strip length
 Ambient temperature
 Soldering temperature

6 ~ 7mm
 -40°C ~ +115°C
 250°C ±10°C/5sec

Dimensions

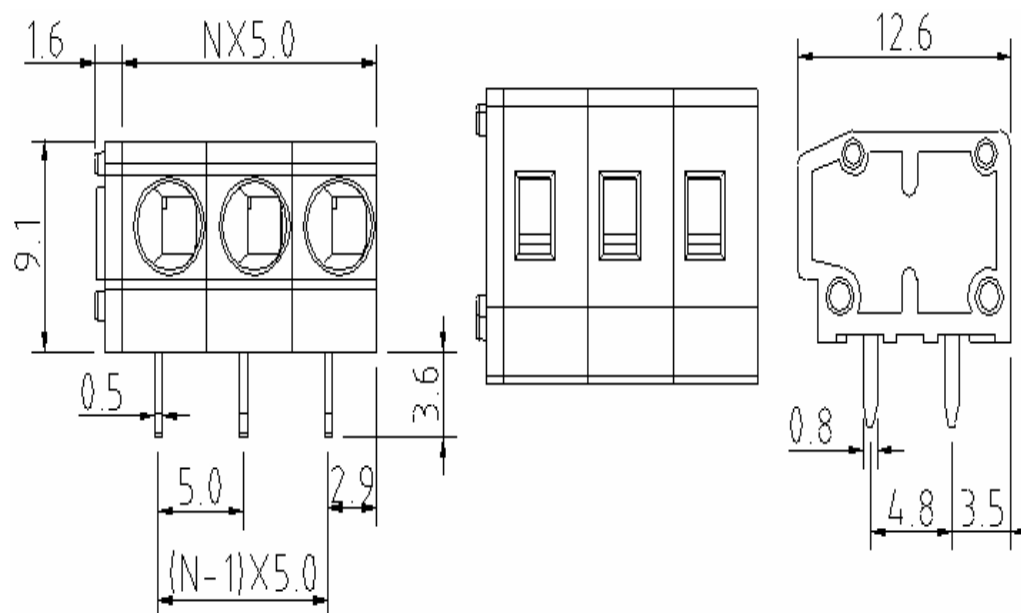
Pitch
 Poles

5.00mm
 2P - 24P

Material

Housing
 Pin header
 Wire guard

Thermoplastic (UL94V-0)
 Brass, Tin plated
 Stainless steel



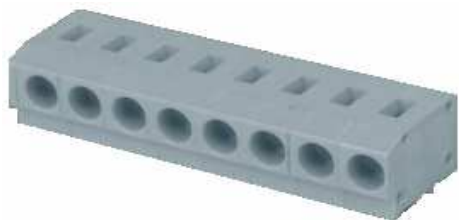
Screwless Terminal Block

Part No.: **A11L008**

Customer:

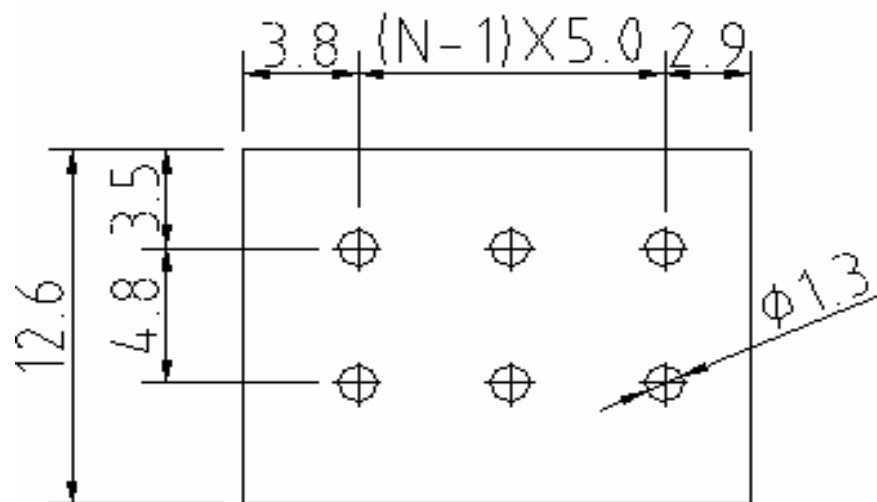
DRW:	Jason	CHKD	Wilson	MATL:	Wilson	TOLERANCE	Mason	DATE	31.01.2014
APPD:	Schumi			FINISH	Jamy		Sheet No.	1 from 4	

EDCON-COMPONENTS



PCB Layout (Dimension in mm)

Dimensions (mm)



No. of Pos.	A	Tol. P	B	Tol. P
02	11,60	± 0,35	5,00	± 0,35
03	16,60	± 0,35	10,00	± 0,35
04	21,60	± 0,35	15,00	± 0,35
05	26,60	± 0,35	20,00	± 0,35
06	31,60	± 0,35	25,00	± 0,35
07	36,60	± 0,35	30,00	± 0,35
08	41,60	± 0,35	35,00	± 0,35
09	46,60	± 0,35	40,00	± 0,35
10	51,60	± 0,35	45,00	± 0,35
11	56,60	± 0,35	50,00	± 0,35
12	61,60	± 0,35	55,00	± 0,35
13	66,60	± 0,35	60,00	± 0,35
14	71,60	± 0,35	65,00	± 0,35
15	76,60	± 0,35	70,00	± 0,35
16	81,60	± 0,35	75,00	± 0,35
17	86,60	± 0,35	80,00	± 0,35
18	91,60	± 0,35	85,00	± 0,35
19	96,60	± 0,35	90,00	± 0,35
20	101,60	± 0,35	95,00	± 0,35
21	106,60	± 0,35	100,00	± 0,35
22	111,60	± 0,35	105,00	± 0,35
23	116,60	± 0,35	110,00	± 0,35
24	121,60	± 0,35	115,00	± 0,35

Screwless Terminal Block

Part No.: **A11L008**

DRW:	Jason	CHKD	Wilson	MATL:	Wilson	TOLERANCE	Mason	DATE	31.01.2014
APPD:	Schumi			FINISH	Jamy		Sheet No.	2 from 4	Customer:

EDCON-COMPONENTS



Ordering Informations

Serie	No. of Pos.	Body Color	Approval	Approval Code	ROHS	Packing	EDCON Cust. No.	Customer Version		
-------	-------------	------------	----------	---------------	------	---------	-----------------	------------------	--	--

A11L008	02	GY	N	N	R	B				
----------------	-----------	-----------	----------	----------	----------	----------	--	--	--	--

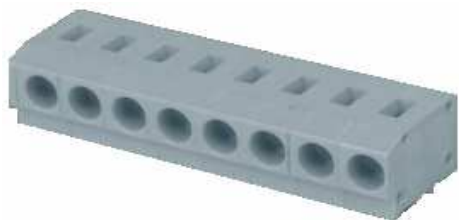
Pitch 5,00	02 = Number of Pos. Standard 2~24 Pos.	GY = Gray (Standard) GN = Green OR = Orange BK = Black	N = No Approval 1 = Approval for Material 2 = Approval for Terminal Block	N = NON Approval A = UL /UR Approval Please consult EDCON for available B = VDE Approval Please consult EDCON for available C = TÜV Approval Please consult EDCON for available	R = ROHS Conform N = NON ROHS Conform	B = Standard Package I = Individual Package	xxxxxx = Customer Number	xxx = Customer Version ??(Printing)		
---------------	--	---	--	--	--	--	---------------------------------	--	--	--

Screwless Terminal Block

Part No.: **A11L008**

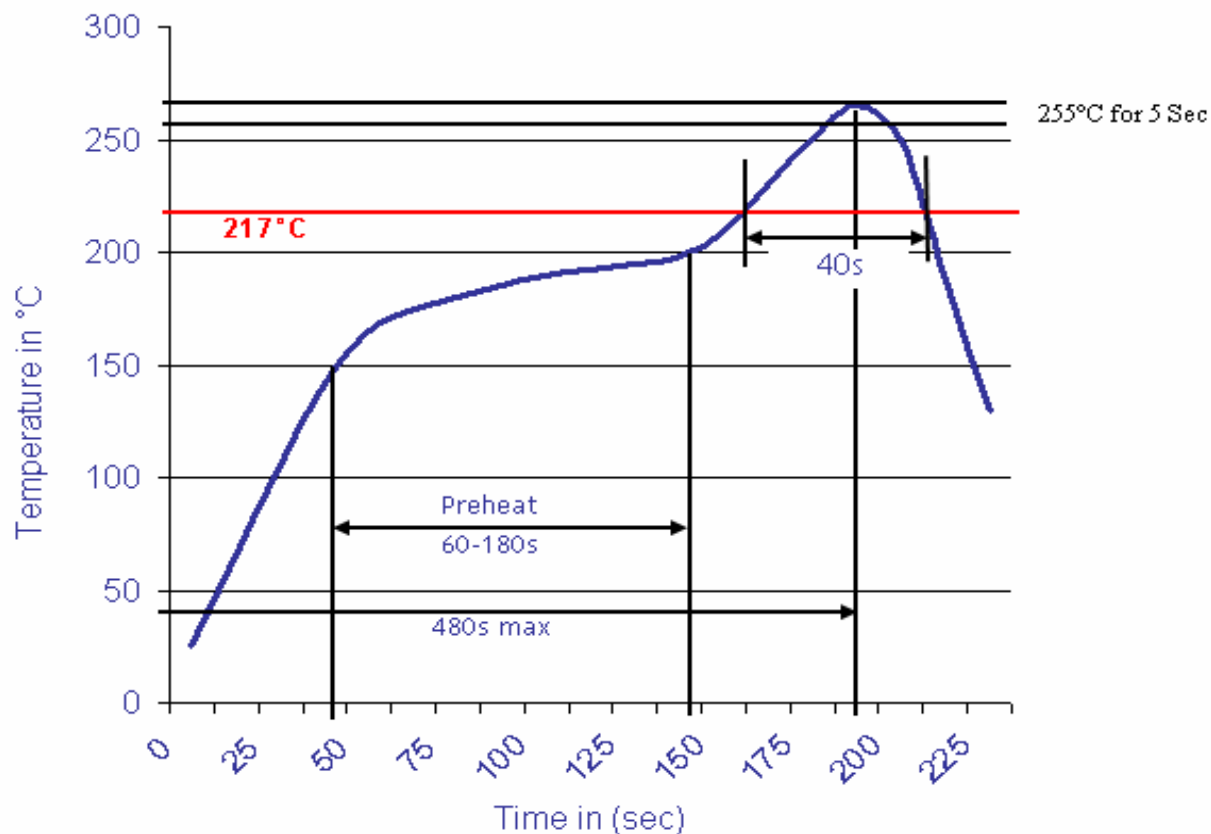
DRW:	Jason	CHKD	Wilson	MATL:	Wilson	TOLERANCE	Mason	DATE	31.01.2014
APPD:	Schumi			FINISH	Jamy		Sheet No.		3 from 4

Customer:



Soldering Profile Curve

Classification Reflow Profile (JEDEC J-STD-020C)



Screwless Terminal Block

Part No.: **A11L008**

Customer:

DRW:	Jason	CHKD	Wilson	MATL:	Wilson	TOLERANCE	Mason	DATE	31.01.2014
APPD:	Schumi			FINISH	Jamy		Sheet No.	4 from 4	

