

Data Sheet

Screwless Terminal Block

Pitch: 4,50 mm

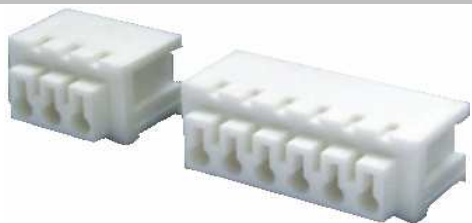
Serie: A11J001

Customer Information for special Item

EDCON Customer : 0

Customer Version No. : 0

EDCON-COMPONENTS



Technical Discription

Drawing (Dimension in mm)

Electrical

Standard	VDE
Rated voltage	250V
Rated current	2A
Wire range	0.5 ~ 0.75mm ²
Withstanding voltage	2KV

Mechanical

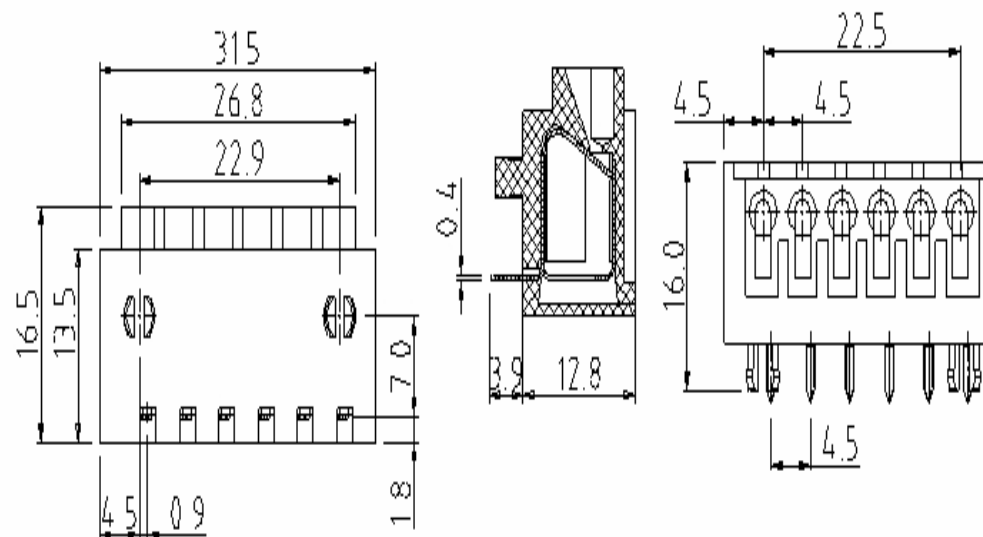
Wire strip length	6 ~ 7mm
Ambient temperature	-30°C ~ +105°C
Soldering temperature	250°C ±10°C/5 sec

Dimensions

Pitch	4.50mm
Poles	3P, 6P

Material

Housing	Thermoplastic (UL94V-0)
Pin header	PhBz, Tin plated
Wire guard	Stainless steel



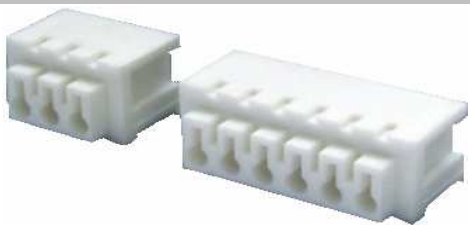
Screwless Terminal Block

Part No.: **A11J001**

Customer:

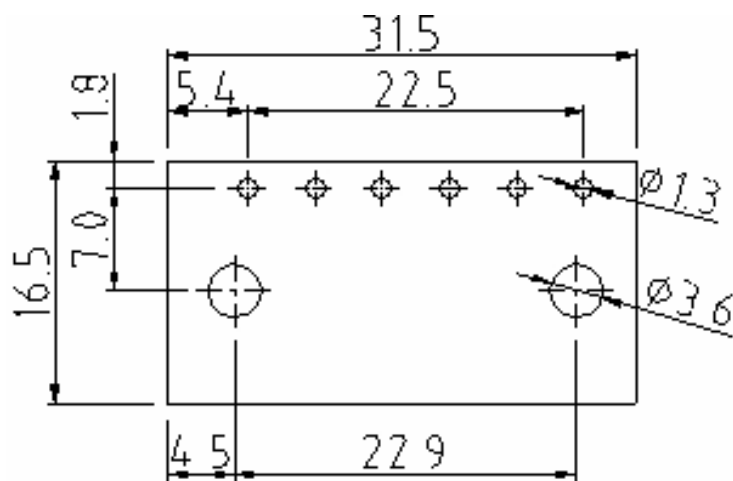
DRW:	Jason	CHKD	Wilson	MATL:	Wilson	TOLERANCE	Mason	DATE	31.09.14
APPD:	Schumi			FINISH	Jamy		Sheet No.		1 from 4

EDCON-COMPONENTS



PCB Layout (Dimension in mm)

Dimensions (mm)



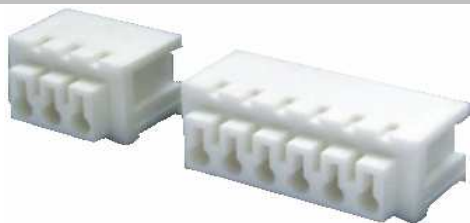
No. of Pos.	A	Tol. P	B	Tol. P
03	18,00	± 0,35	9,00	± 0,35
06	31,50	± 0,35	22,50	± 0,35

Screwless Terminal Block

Part No.: **A11J001**

DRW:	Jason	CHKD	Wilson	MATL:	Wilson	TOLERANCE	Mason	DATE	31.09.14	Customer:
APPD:	Schumi			FINISH	Jamy		Sheet No.	2 from 4		

EDCON-COMPONENTS



Ordering Informations

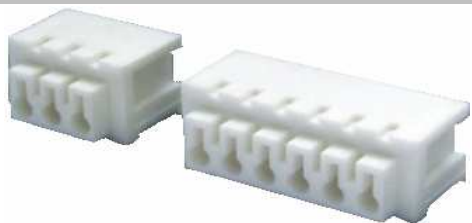
Serie	No. of Pos.	Body Color	Approval	Approval Code	ROHS	Packing	EDCON Cust. No.	Customer Version		
A11J001	02	GY	N	N	R	B				

Pitch
4,50

02= Number of Pos. Standard 2 ~ 24Pos.	GY= Gray (Standard) GN= Green OR= Orange BK= Black	N= No Approval 1= Approval for Material 2= Approval for Terminal Block	N= NON Approval A= UL /UR Approval Please consult EDCON for available B= VDE Approval Please consult EDCON for available C= TÜV Approval Please consult EDCON for available	R= ROHS Conform N= NON ROHS Conform	B= Standard Package I= Individual Package	xxxxxx= Customer Number	xxx= Customer Version ??(Printing)
--	---	---	--	--	--	--------------------------------	---

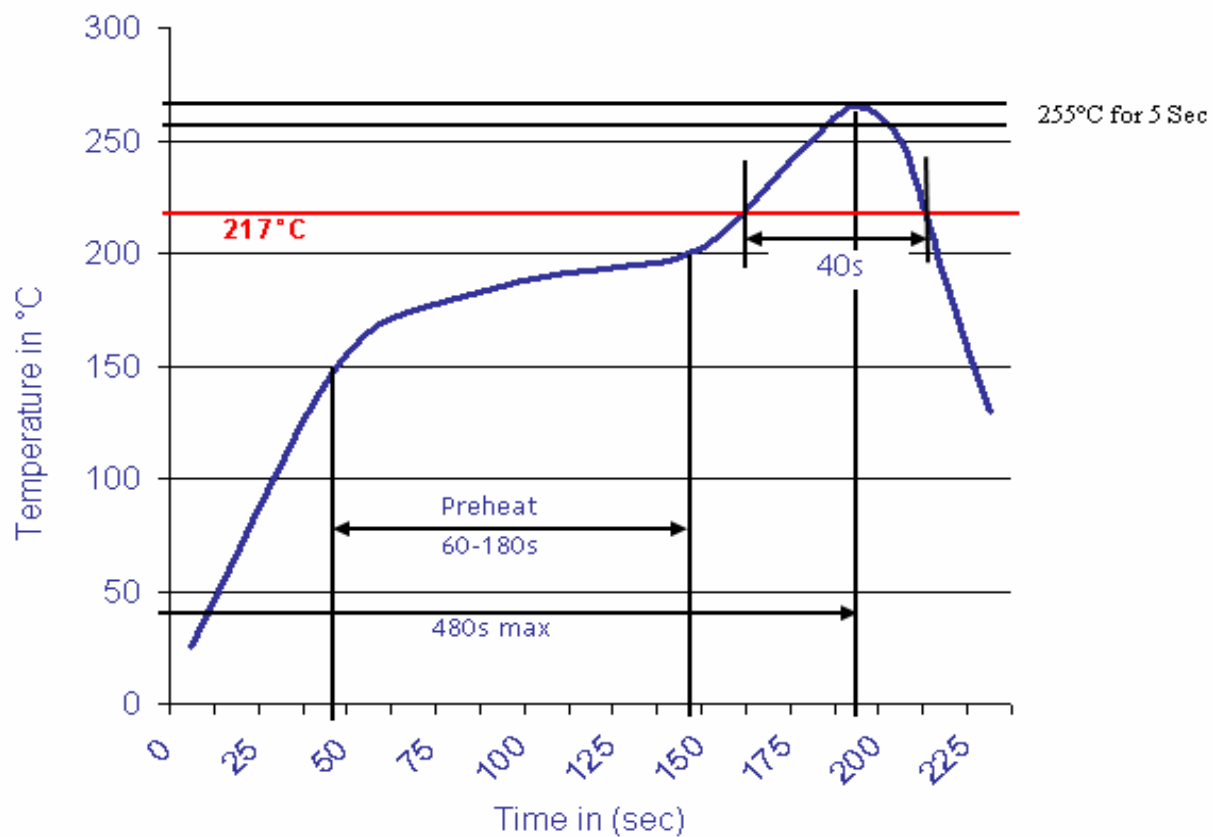
Screwless Terminal Block	
Part No.:	A11J001
Customer:	

DRW:	Jason	CHKD	Wilson	MATL:	Wilson	TOLERANCE	Mason	DATE	31.09.14
APPD:	Schumi			FINISH	Jamy		Sheet No.		3 from 4



Soldering Profile Curve

Classification Reflow Profile (JEDEC J-STD-020C)



Screwless Terminal Block

Part No.: **A11J001**

Customer:

DRW:	Jason	CHKD	Wilson	MATL:	Wilson	TOLERANCE	Mason	DATE	31.09.14
APPD:	Schumi			FINISH	Jamy		Sheet No.	4 from 4	

